

# ADELAIDE MERCHANDISING

**SHOP ONLINE NOW**

**AdSHOP**



## MATERIALS HANDLING PRODUCT CATALOGUE

**REVISION**  
**2015-2016**

# CONTENTS

4		SWL UP TO 250KG	5	featheR 	UP TO 125KG	6	tuffR 	UP TO 300KG	7	tuffR 	UP TO 300KG
SAFETY STEP			LIGHTWEIGHT FOLDING TROLLEYS			MIGHTY TOUGH GENERAL PURPOSE TROLLEYS			PRAM HANDLE HAND TROLLEYS		
7	tuffR 	UP TO 300KG	8	tuffR 	UP TO 300KG	9	tuffR 	UP TO 300KG	10	tuffR 	UP TO 300KG
FLAT BACK CARTON TROLLEYS			EASY TILT TROLLEYS			1200MM REFRIGERATOR, APPLIANCE & STAIRCLIMBER TROLLEYS			1500MM REFRIGERATOR, APPLIANCE & STAIRCLIMBER TROLLEYS		
11		UP TO 200KG	12	lightR 	UP TO 250KG	13		UP TO 250KG	14	tuffR 	SWL UP TO 600KG
P HANDLE TROLLEYS			CARTON TROLLEYS (ALUMINIUM)			DUAL PURPOSE TROLLEYS (ALUMINIUM)			PIANO DOLLIES		
15	skateR 	SWL UP TO 400KG	16		SWL UP TO 200KG	16		SWL UP TO 400KG	17		UP TO 120KG
SKATE DOLLIES			TUB DOLLIES			DRUM DOLLIES			FOLDING PLATFORM TROLLEYS		
18		SWL UP TO 300KG	19		SWL UP TO 300KG	20		SWL UP TO 500KG	21	tuffR 	SWL UP TO 100KG
FOLDING PLATFORM TROLLEYS			PLATFORM TROLLEYS			ALUMINIUM PLATFORM TROLLEYS			ORDER PICKERS		
21		SWL UP TO 250KG	22		UP TO 250KG	23		UP TO 250KG	23		UP TO 250KG
STOCK PICKERS			SERVICE TROLLEYS			SERVICE TROLLEYS			SERVICE TROLLEYS		
24		UP TO 600KG	25		UP TO 200KG	26		UP TO 200KG	27		SWL UP TO 2.5T
ROLL CAGES			WHEELBARROWS			ATV TRAILER			PALLET TRUCKS		
28		SWL UP TO 1.5T	28		SWL UP TO 2T	29		UP TO 1.5T	30	tugR 	UP TO 1T
SEMI ELECTRIC PALLET TRUCK			ELECTRIC PALLET TRUCK			BATTERY ELECTRIC TUG			TUGR		



# CONTENTS

32		SWL UP TO 1T	33		SWL UP TO 80KG	33		SWL UP TO 180KG	34		SWL UP TO 400KG
	SKID LIFTERS			MINI WINCH TYPE FORK STACKER			WINCH TYPE FORK STACKER			MANUAL HYDRAULIC FORK STACKER	
34		SWL UP TO 400KG	35		SWL UP TO 150KG	36		SWL UP TO 1.5T	36		SWL UP TO 1.3T
	BATTERY ELECTRIC FORK STACKER			UNIVATORS			STRADDLE BATTERY ELECTRIC FORK STACKER			COUNTER BALANCED BATTERY ELECTRIC FORK STACKER	
37		SWL UP TO 500KG	38		SWL UP TO 500KG	38		SWL UP TO 500KG	39		SWL UP TO 4T
	FOOT OPERATED TABLE LIFTERS			BATTERY ELECTRIC DOUBLE SCISSORED TABLE LIFTER			BATTERY ELECTRIC DRIVEN PLATFORM TROLLEY			SINGLE SCISSOR POWERED TABLE LIFTERS	
39		SWL UP TO 2T	40		SWL UP TO 24T	40		SWL UP TO 60T	41		UP TO 120KG
	DOUBLE SCISSOR POWERED TABLE LIFTER			ADJUSTABLE LOAD SKATES			LOAD SKATE KITS			CONVEYOR ROLLERS	
43			44			45			46		
	GRAVITY CONVEYORS			GRAVITY CONVEYOR BENDS			CONVEYOR FRAMES & STANDS			POWERED & NON POWERED LINE SHAFT CONVEYORS	
47			48		UP TO 100KG	49			50		UP TO 227KG
	BELT CONVEYORS			FLEX CONVEYORS			POWERED FLEX CONVEYOR			BALL TRANSFERS	
51			51		UP TO 1.4T	52		SWL UP TO 250KG	53		UP TO 800KG
	FLOW RAIL			SKATE RAILS			SAFETY CAGE			SLIDING AC POWERED GATE KIT	
54		UP TO 500KG	55		UP TO 420KG	56			57		UP TO 20KG
	SWING AC POWERED GATE KIT			GATE TRACK WHEELS			GATE ACCESSORIES			SPRING LOADED GATE CASTORS	

# CONTENTS



# OUR STORE



CALL IN NOW AT  
**9-11 Grove Avenue - Marleston, 5033**



UP TO 250KG

# SAFETY STEP

NEW AND  
IMPROVED  
DESIGN!

With a high level of injuries occurring when reaching for goods above shoulder height, Richmond is pleased to offer the latest in Safety Steps.

Lightweight in construction yet robust in design, Richmond's safety step is perfect for use in: Offices, Libraries, Supermarkets, Department stores, Medical facilities, Warehouses or where ever higher access is required. Easy to pick up and reposition, the Safety Step features a larger surface area of high grip tape with an indented step accessible from each of the four sides.

This Safety Step has a structurally reinforced underside that prevents sagging to give full stability and a flat surface at all times. Richmond's Safety Step is an economical and user friendly alternative to a step ladder.

Manufactured with high visibility in mind, Richmond's Safety Step provides your workplace with extra reach and improved safety.



SSR001

## SPECIFICATIONS

Model Number	Dimensions (mm)	Weight (kg)	Safe Working Load (kg)
SSR001	520 (L) x 520 (W) x 365 (H)	3.7	250





# feather **R** LIGHTWEIGHT FOLDING TROLLEYS

UP TO 125KG

This innovative light weight range of trolleys comes in 4 sizes and easily folds down for storing into small spaces such as car boots or cupboard shelves.

From the folded position, a single action lifts the handle, lowers the platform and locks the wheels into position ready for use. With safe working loads from 60 to 200kgs, Richmond's Lightweight Folding Hand Trolley features puncture proof wheels providing a cushioned ride protecting your load whether it be up and down gutters, stairs, bitumen or tiled surfaces.



FAR003FPK  
FOLDED  
POSITION

## SPECIFICATIONS

Model Number	Collapsed Height (mm)	Extended Height (mm)	Thickness Folded (mm)	Overall Width (mm)	Wheel Size (mm)	Flat Pack Dimensions (mm)	Load Capacity (kg)
FAR001FPK	630	1000	55	400	125	700(L) x 420(W) x 80(H)	60
FAR002FPK	780	1000	60	500	175	800(L) x 550(W) x 80(H)	90
FAR003FPK	790	1060	65	515	175	800(L) x 500(W) x 80(H)	125
FAR004FPK	1010	1280	75	615	200	1035(L) x 620(W) x 95(H)	200

ALL LIGHTWEIGHT FOLDING TROLLEYS ARE SUPPLIED FLATPACK IN A CARDBOARD CARTON



FAR001FPK



FAR002FPK



FAR003FPK



FAR004FPK





# MIGHTY TOUGH GENERAL PURPOSE TROLLEYS

UP TO 300KG

**Mighty Tough by name, Mighty Tough by nature. Suitable for loads up to 300kg, Richmond's versatile hand trolley is designed for long term heavy duty use.**

Built to last, the frame is manufactured using heavy wall steel pipe (not tube) and designed using Richmond's 50 plus years of material handling experience. Heavy duty 3 piece steel rim pneumatic wheels with precision ball bearings are the answer for absorbing the perils of rough ground, protecting the load and ensuring safe and efficient use day in day out.

Optional 300mm diameter wide treaded pneumatic wheels suitable for use on a variety of surfaces including soft moving ground. Puncture proof wheels are also available to suit Richmond's Mighty Tough Hand Trolley. Designed to last and made to be the best you can buy.



MTR101

## SPECIFICATIONS

Model Number	Trolley Size (mm)	Toe Plate Size (mm)	Wheel Type	Tyre Size (mm)	Weight (kg)	Load Capacity (kg)
MTR101	1180 x 370	350(W) x 280(L)	Pneumatic	410 x 3.50 x 4	18	300
MTR102	1180 x 370	350(W) x 280(L)	Pneumatic	13 x 5.00 x 6	20	300
PUNCTURE PROOF WHEEL MODEL						
MTR100	1180 x 370	350(W) x 280(L)	Puncture Proof	410 x 3.50 x 4	18	200



MTR102  
OPTIONAL WIDE  
TREAD WHEELS



RSR001

OPTIONAL  
**strapR**



# tuffR PRAM HANDLE TROLLEYS

UP TO 300KG

If you are a professional looking for a hand trolley to move heavy items such as newspapers, flat packages, cartons, boxes or more in the office or delivery industries, you needn't look further than Richmond's Pram Handle Trolleys.

Richmond's trolleys feature a thicker reinforced axle, high quality welds for rigidity, heavier gauged steel wall tubing and our market leading pneumatic and puncture proof wheels to save on costly downtime.

Richmond provides two different models of Pram Handle Trolleys:

- The PRR124 features puncture proof tyres and a capacity of 200kg
- The PRR125 features pneumatic wheels and a capacity of 300kg



RSR001

OPTIONAL

strapR

## SPECIFICATIONS

Model Number	Trolley Size (mm)	Toe Plate Size (mm)	Tyre Size (mm)	Wheel Type	Load Capacity (kg)
PRR125	1300 x 540	360 x 310	4.10/3.50-4	Pneumatic	300
PUNCTURE PROOF WHEEL MODEL					
PRR124	1300 x 540	360 x 310	4.10/3.50-4	Puncture Proof	200

# tuffR FLAT BACK CARTON TROLLEYS

UP TO 300KG

Safely moving heavy cartons can be a breeze with Richmond's Flat Back Trolleys. At Richmond we pride ourselves on the robust nature of our products and with a high quality welded straight back, ergonomically curved handle, thicker reinforced axle, wide toe platform and our industry leading puncture proof tyres, our Flat Back Trolleys are no exception. Rest assured that when it comes to safety, strength, comfort and efficiency, our Flat Back Trolleys are the best fit for the job.

Richmond provides two different models of Flat Back Trolleys:

- The CTR122 features puncture proof tyres and a capacity of 200kg
- The CTR123 features pneumatic tyres and a capacity of 300kg



CTR123

## SPECIFICATIONS

Model Number	Trolley Size (mm)	Toe Plate Size (mm)	Tyre Size (mm)	Wheel Type	Load Capacity (kg)
CTR123	1250 x 550	410 x 310	4.10/3.50-4	Pneumatic	300
PUNCTURE PROOF WHEEL MODEL					
CTR122	1250 x 550	410 x 310	4.10/3.50-4	Puncture Proof	200





## ETR107

LOAD CAPACITY: 300kg  
TROLLEY SIZE: 1290 x 370mm  
TOE PLATE SIZE: 430 x 245mm  
TYRE SIZE: 4.10/3.50-4  
WHEEL TYPE: Puncture Proof



## ETR106

LOAD CAPACITY: 300kg  
TROLLEY SIZE: 1290 x 370mm  
TOE PLATE SIZE: 430 x 245mm  
TYRE SIZE: 4.10/3.50-4  
WHEEL TYPE: Pneumatic



## ETR105

LOAD CAPACITY: 300kg  
TROLLEY SIZE: 1600 x 430mm  
TOE PLATE SIZE: 430 x 245mm  
TYRE SIZE: 4.10/3.50-6  
WHEEL TYPE: Pneumatic



## ETR109

LOAD CAPACITY: 300kg  
TROLLEY SIZE: 1300 x 430mm  
TOE PLATE SIZE: 430 x 245mm  
TYRE SIZE: 4.10/3.50-6  
WHEEL TYPE: Pneumatic



## ETR112

LOAD CAPACITY: 300kg  
TROLLEY SIZE: 1290 x 370mm  
TOE PLATE SIZE: 430 x 245mm  
TYRE SIZE: 4.10/3.50-4  
WHEEL TYPE: Puncture Proof



## ETR108

LOAD CAPACITY: 300kg  
TROLLEY SIZE: 1430 x 370mm  
TOE PLATE SIZE: 430 x 245mm  
TYRE SIZE: 4.10/3.50-4  
WHEEL TYPE: Pneumatic



## APR117S\* APPLIANCE

LOAD CAPACITY: 200kg  
TROLLEY SIZE: 1200 x 425mm  
TOE PLATE SIZE: 275 x 425mm  
TYRE SIZE: 2.50-6  
WHEEL TYPE: Puncture Proof



## APR118S\* APPLIANCE

LOAD CAPACITY: 300kg  
TROLLEY SIZE: 1200 x 425mm  
TOE PLATE SIZE: 275 x 425mm  
TYRE SIZE: 2.50-6  
WHEEL TYPE: Pneumatic



## APR126S\* APPLIANCE

LOAD CAPACITY: 200kg  
TROLLEY SIZE: 1200 x 425mm  
TOE PLATE SIZE: 275 x 425mm  
TYRE SIZE: 4.10/3.50-4  
WHEEL TYPE: Puncture Proof



## APR127S\* APPLIANCE

LOAD CAPACITY: 300kg  
TROLLEY SIZE: 1200 x 425mm  
TOE PLATE SIZE: 275 x 425mm  
TYRE SIZE: 4.10/3.50-4  
WHEEL TYPE: Pneumatic



## SCR114S\* STAIRCLIMBER

LOAD CAPACITY: 250kg  
TROLLEY SIZE: 1200 x 410mm  
TOE PLATE SIZE: 275 x 425mm  
TYRE SIZE: 150mm  
WHEEL TYPE: Rebound Rubber



RTR116

AVAILABLE AS  
REPLACEMENT PART



FITS MOST RICHMOND  
HAND TROLLEYS

RSR001

strapR





### FTR119S\* FRIDGE

LOAD CAPACITY: 200kg  
TROLLEY SIZE: 1500 x 425mm  
TOE PLATE SIZE: 275 x 425mm  
TYRE SIZE: 2.50-6  
WHEEL TYPE: Puncture Proof



### FTR120S\* FRIDGE

LOAD CAPACITY: 300kg  
TROLLEY SIZE: 1500 x 425mm  
TOE PLATE SIZE: 275 x 425mm  
TYRE SIZE: 2.50-6  
WHEEL TYPE: Pneumatic



### FTR128S\* FRIDGE

LOAD CAPACITY: 200kg  
TROLLEY SIZE: 1500 x 425mm  
TOE PLATE SIZE: 275 x 425mm  
TYRE SIZE: 4.10/3.50-4  
WHEEL TYPE: Puncture Proof



### FTR129S\* FRIDGE

LOAD CAPACITY: 300kg  
TROLLEY SIZE: 1500 x 425mm  
TOE PLATE SIZE: 275 x 425mm  
TYRE SIZE: 4.10/3.50-4  
WHEEL TYPE: Pneumatic



### SCR115S\* STAIRCLIMBER

LOAD CAPACITY: 250kg  
TROLLEY SIZE: 1500 x 410mm  
TOE PLATE SIZE: 275 x 425mm  
TYRE SIZE: 150mm  
WHEEL TYPE: Rebound Rubber



RTR116  
AVAILABLE AS  
REPLACEMENT PART



FITS MOST RICHMOND  
HAND TROLLEYS

RSR001

strapR

ALL 1500mm  
REFRIGERATOR  
& STAIRCLIMBER  
TROLLEYS  
SUPPLIED WITH  
FIXING RATCHET  
STRAP

# P HANDLE TROLLEYS

UP TO 200KG

If you're a professional requiring a hand trolley built for performance, why risk your business or precious time on an unreliable "prone" to breakdown super cheap trolley? Richmond's P Handle is an alternative without breaking the bank and is suited to commercial service and the rigours of courier and high frequency use.

Priding ourselves on our 50 plus years of materials handling experience and not allowing our customers to settle for anything less than the best, we have improved on the cheap and nasty. Richmond's trolley features a thicker reinforced axle, high quality welds for rigidity and our market leading pneumatic wheels.

- The economy models (PHR103, PHR106) feature a standard 10" pneumatic wheel
- The premium models (PHR110, PHR107) have a heavy duty 10", 3 piece pneumatic wheel with precision bearings
- The puncture proof wheel models (PHR104, PHR108) with precision bearings eliminates the costly downtime

## SPECIFICATIONS

Model Number	Trolley Size (mm)	Toe Plate Size (mm)	Tyre Size (mm)	Wheel Type	Load Capacity (kg)
PHR103	1320 x 350	350(W) x 180(L)	4.10/3.50-4	Pneumatic	200
PHR110	1320 x 350	350(W) x 180(L)	4.10/3.50-4	Pneumatic	200
PUNCTURE PROOF WHEEL MODEL					
PHR104	1320 x 350	350(W) x 180(L)	4.10/3.50-4	Puncture Proof	200
BIGFOOT ATTACHMENT MODELS					
PHR106	1320 x 350	350(W) x 180(L)	4.10/3.50-4	Pneumatic	200
PHR107	1320 x 350	350(W) x 180(L)	4.10/3.50-4	Pneumatic	200
PHR108	1320 x 350	350(W) x 180(L)	4.10/3.50-4	Puncture Proof	200



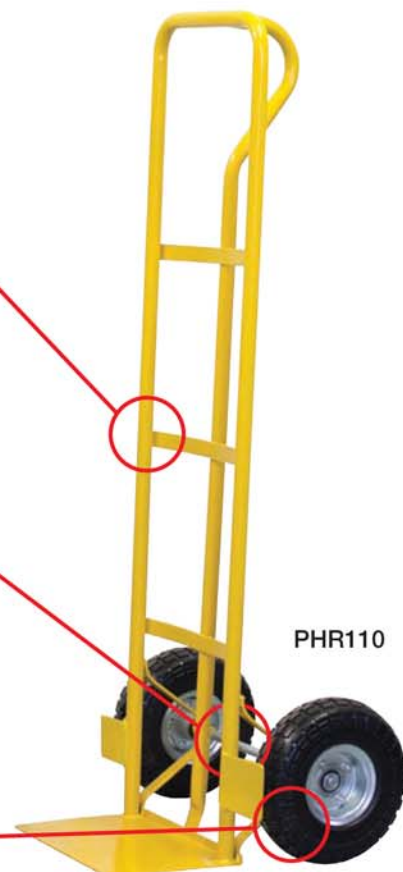
HIGH QUALITY WELDS



THICK REINFORCED AXLE



PNEUMATIC WHEEL WITH PRECISION BEARINGS



PHR110



"BIGFOOT" ATTACHMENT (PHR111) COMES STANDARD ON PHR106, PHR107 & PHR108 MODELS



# light<sup>R</sup> CARTON HAND TROLLEYS (ALUMINIUM)

UP TO 250KG

Manufactured from robust aluminum extrusions, this 2 wheeled trolley is a perfect choice when the unit has to be lifted in and out of trucks all day. Its light weight, but high strength makes it the go to model for professionals. The high back makes it popular with removalists due to the ease with which it can handle heavy and awkward items.

Again fitted with high quality pneumatic wheels designed by Richmond, maximizing performance, safety, reliability and efficiency. This Richmond hand trolley comes with a range of optional toe plates to suit your load, providing the utmost in safe handling. Puncture proof pneumatic wheels are another



CTR011

## SPECIFICATIONS

Model Number	Trolley Size (mm)	Platform (mm)	Wheel Type	Net Weight (kg)	Overall Size (mm)	Load Capacity (kg)
CTR011	310 x 1550	305 x 1300	Pneumatic	12.2	420 x 510 x 1260	250
PUNCTURE PROOF WHEEL MODEL						
CTR012	310 x 1550	305 x 1300	Puncture Proof	12.2	420 x 510 x 1260	250

ALUMINIUM CARTON TROLLEYS CAN BE ORDERED FLATPACK BY ADDING "FPK" TO THE PRODUCT CODE - EG. CTR011FPK





# DUAL PURPOSE TROLLEYS (ALUMINIUM)

UP TO 250KG

Manufactured from robust aluminum extrusions this is the ultimate trolley for delivery trucks. Light in weight but with high strength the 2 wheeler easily converts by the pull of a spring loaded lever into a versatile 4 wheel platform trolley.

It is simple to load and highly maneuverable, featuring an ergonomic handle in either position with ultra safe operation. Again fitted with the highest quality pneumatic wheels and polyurethane tyred castors, designed to maximize performance, safety, reliability and efficiency. This Richmond Dual Purpose hand trolley comes with a range of optional toe plates to suit your load, providing the utmost in safe handling. Foam filled puncture proof pneumatic wheels offer another option for use on open ground.



DPR010

## SPECIFICATIONS

Model Number	Trolley Size (mm)	Platform Size (mm)	Wheel Type	Overall Size (mm)	Load Capacity (kg)
DPR009	305 x 1310	305 x 970	Pneumatic	520 x 1190 x 1030	250
DPR010	305 x 1565	305 x 1300	Pneumatic	520 x 1450 x 1150	250
PUNCTURE PROOF WHEEL MODELS					
DPR007	305 x 1365	305 x 1300	Puncture Proof	520 x 1450 x 1150	250
DPR008	305 x 1310	305 x 970	Puncture Proof	520 x 1190 x 1150	250

DUAL PURPOSE ALUMINIUM TROLLEYS CAN BE ORDERED FLATPACK BY ADDING "FPK" TO THE PRODUCT CODE - EG. DPR009FPK



PUNCTURE PROOF WHEELS AVAILABLE  
"no more flats!"

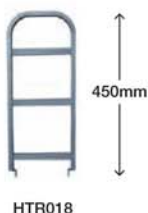


DPR009

ACCESSORIES AVAILABLE



HTR019



HTR018



HTR016



HTR014



HTR017



# tuffR PIANO DOLLIES

UP TO 600KG

The heavy duty piano trolley has been purpose built for the movement of heavy, bulky and awkward loads, including pianos and cabinetry on its flatbed design.

The rigid frame is yellow, high quality, and fitted with protective cushioning to secure your load.



PDR012  
PNEUMATIC

## SPECIFICATIONS

Model Number	Length (mm)	Width (mm)	Height (mm)	Wheel Size (mm)	Wheel Type	Safe Working Load (kg)
PDR011	750	370	245	210	Pneumatic	400
PDR012	750	370	290	260	Pneumatic	400
PDR013	750	370	245	200	Rebound Rubber	600
PUNCTURE PROOF WHEEL MODELS						
PDR009	750	370	245	215	Puncture Proof	400
PDR010	750	370	290	255	Puncture Proof	400



PDR009  
PUNCTURE PROOF



PDR013  
NON MARKING

Richmond's skate<sup>R</sup> provides the ultimate maneuverability from low profile trolley/dollies. Used by professionals such as shopfitters, removalists and freight companies, the skate<sup>R</sup> helps reduce awkward and heavy lifting that can cause injury and costly moving/installation times. The use of a skate<sup>R</sup> allows easy and accurate positioning of goods.

#### Features:

- 19mm thick marine grade timber deck
- Grooved rubber upper to help secure load and prevent damage
- Ergonomically designed handle for easy handling
- Rounded edges for wall and skirting protection fitted with a rubber bead all round
- Non-marking Richmond quality swivel castors for a variety of ground surfaces and easy steering



SKR005



SKR007

## SPECIFICATIONS

Model Number	Length (mm)	Width (mm)	Height (mm)	Platform Size (mm)	Wheel Size (mm)	Safe Working Load (kg)
SKR005	450	300	130	450 x 300	75	320
SKR006	600	450	160	600 x 450	100	400
SKR007	700	500	160	700 x 500	100	400
SKR008	900	600	190	900 x 600	125	500

SKATE DOLLIES CAN BE ORDERED FLATPACK BY ADDING "FPK" TO THE PRODUCT CODE - EG. SKR005FPK

\* NOTE: SKR008 comes fitted with 5 castors





# TUB DOLLIES

UP TO 200KG

Providing the ultimate maneuverability from a lightweight robust design suitable for handling a range of plastic tubs, crates and boxes, whilst improving efficiency and allowing increased productivity, Richmond's Tub Dollies are made for industry.

Fitted with high quality nylon castors to combat obstacles around the workplace and to ensure no flat spotting occurs no matter what the load.



Note: Plastic Tub sold separately

TDR002FPK

## SPECIFICATIONS

Model Number	Weight (kg)	Platform Size (mm)	Platform Height (mm)	Wheel Size (mm)	Safe Working Load (kg)
TDR002FPK	7	600 x 400	115	65	200

TUB DOLLIES ARE SUPPLIED FLATPACK IN A CARDBOARD CARTON



SNR004BLK  
32L



SNR002NAT / SNR002RED  
52L



SNR008BLU  
68L

**MORE TUBS  
TO SUIT ON  
PAGE 55**

# DRUM DOLLIES

UP TO 400KG

Drum dollies are ideal for keeping 205 litre drums mobile. Fitted with four 75mm zinc plated castors with polypropylene wheels, the dollies are tough and cheap workhorses.

Drum Dollies provide economical solutions for all drum requirements. The certain thing about a drum sitting on the floor is that is almost guaranteed to be in the road when you are about to move something else.



DDR001FPK

## SPECIFICATIONS

Model Number	Drum Size (litres)	Inside Diameter (mm)	Flatpack Dimensions (mm)	Safe Working Load (kg)
DDR001FPK	205	605	645(L) x 645(W) x 85(H)	400

SUITS 44 GALLON DRUMS

DRUM DOLLIES ARE SUPPLIED FLATPACK IN A CARDBOARD CARTON

# FOLDING PLATFORM TROLLEYS

UP TO 120KG

An innovative foldable platform trolley, enabling easy transportation because of its lightweight and compact design combined with its great maneuverability it takes all the strain out of operation.

Although Richmond's Plastic Platform pick and store trolley is suitable for heavy loads up to 120kgs it weighs only 6kgs making it the ultimate companion for applications including factory, domestic, office duties, sales and presentations.

See below for a picture of the folded result and you will notice the wheels tuck into the bottom of the platform for maximum space saving efficiency making the trolley ideal for storage including in the boot of most cars.

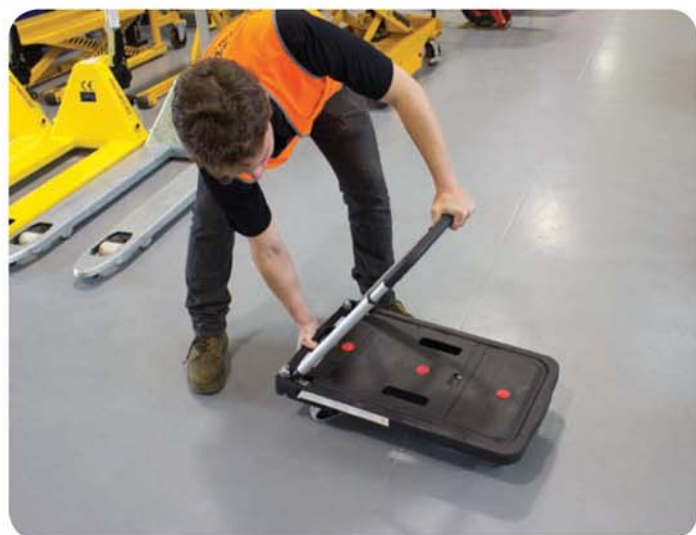


FPR006FPK

## SPECIFICATIONS

Model Number	Platform Size (mm)	Platform Height (mm)	Handle Height (mm)	Wheel Size (mm)	Load Capacity (kg)
FPR006FPK	680 x 410	175	920	100	120

ALL FOLDING PLATFORM TROLLEYS ARE SUPPLIED FLATPACK IN A CARDBOARD CARTON





UP TO 300KG

# FOLDING PLATFORM TROLLEYS

A reinforced underside for increased strength and durability allows for loads up to 300kg to be maneuvered with minimal physical exertion. The anti slip platform prevents the load from shifting whilst loading/unloading and in transportation.

Constructed from high quality plastic, Richmond's Plastic Platform Trolley will provide longevity in demanding workplaces. These unique properties lend themselves to wet and refrigerated areas and makes this trolley ideal for supermarkets, cool rooms, greengrocers and industrial applications.

A foldable handle provides easy storage and Richmond can offer a wide range of castors to suit your ground surface, environment and load capacity requirements.



FPR001FPK

## SPECIFICATIONS

Model Number	Weight (kg)	Platform Size (mm)	Platform Height (mm)	Handle Height (mm)	Wheel Size (mm)	Safe Working Load (kg)
FPR001FPK	20	920 x 610	217	971	125	300

ALL FOLDING PLATFORM TROLLEYS ARE SUPPLIED FLATPACK IN A CARDBOARD CARTON



# PLATFORM TROLLEYS

UP TO 300KG

Versatile, maneuverable, lightweight yet robust heavy duty design all encompassed with a non slip deck. Available in two different sizes and three configurations, this Richmond Platform Trolley is perfect for most applications. An ergonomic design to take the strain out pushing goods safely and efficiently, the platform features a reinforced underside for optimum strength and durability.

Surrounded by a plastic bumper to prevent damage to walls and furniture, the platform trolley is not only for industrial uses. A wide array of wheel options can be customised to suit floor surfaces. Of course all Richmond Castors offer the smoothest quietest ride for operator comfort and performance.

Both PFR010FPK and PFR009FPK come with a foldable handle to make storage and transporting in the back of vehicles easier. The larger platforms come with an option of having a handle at either end for maximum productivity.



PFR009FPK

## SPECIFICATIONS

Model Number	Platform Size (mm)	Platform Height (mm)	Handle Height (mm)	Wheel Size (mm)	Safe Working Load (kg)
PFR012FPK	(2x) 790 x 480	137	860	100	120
PFR010FPK	740 x 480	137	860	100	150
PFR009FPK	910 x 610	180	860	125	250
PFR008FPK	1160 x 760	240	860	160	300
PFR011FPK	1160 x 760	240	860	160	300

ALL PLATFORM TROLLEYS ARE SUPPLIED FLATPACK IN A CARDBOARD CARTON



PFR008FPK



PFR010FPK



PFR011FPK



PFR012FPK



UP TO 500KG

# ALUMINIUM PLATFORM TROLLEYS

Richmond's 4 wheel Aluminum Platform Trolleys are not only highly maneuverable, they are lightweight and strong. The design comes in 3 different platform sizes and comes available with 1 or 2 (removable handles). Fitted with 150mm diameter castors as standard (2 Swivel and 2 rigid) the trolleys are also available with 4 swivels that can also be fitted with swivel lock and brakes.

This attractive design will never rust and is very easy to keep clean. The trolley is perfect for the pharmaceutical and hospitality industries as well as industrial packing lines, including wet and refrigerated areas. High visibility protective rubber edges not only increase safety but also protect walls and workbenches from impact damage.

Richmond can offer a wide range of castors to suit your ground surface, environment and load capacity requirements.



## SPECIFICATIONS

Model Number	Weight (kg)	Platform Size (mm)	Platform Height (mm)	Handle Height (mm)	Wheel Size (mm)	Safe Working Load (kg)
PAR004FPK	21	915 x 610	260	940	150	1350
PAR003FPK	27	1220 x 610	260	940	150	1350
PAR005FPK	34	1525 x 760	260	940	150	1100

ALL ALUMINIUM PLATFORM TROLLEYS ARE SUPPLIED FLATPACK IN A CARDBOARD CARTON





# tuffR ORDER PICKERS

UP TO 100KG

**Improve efficiency in repeat picking and packing application and reduce manual handling with a Richmond Order Picker.**

Suitable for plastic crates and tubs (sold separately through your local Richmond store) this stylish order picker is fitted with 100mm quiet running rubber swivel castors for unprecedented comfort and maneuverability. Office, retail, libraries and warehouses alike have all benefited from this products unlimited uses time and time again. Optional stainless steel castors make it suitable for food handling and processing applications.

**WIDE RANGE OF TUBS TO SUIT ARE AVAILABLE**



**SEE PAGE 55 FOR FULL RANGE**



SNR002NAT / SNR002RED  
52L



SNR008BLU  
68L



OPR002

**OPR002 COMES ASSEMBLED AND SUPPLIED WITH 32L BLACK TUB**

## SPECIFICATIONS

Model Number	Wheel Diameter (mm)	Size (L x W x H)	Safe Working Load (kg)
OPR001FPK	100	860 x 430 x 990mm	100
OPR002	100	860 x 430 x 990mm	100

**OPR001FPK SUPPLIED FLATPACK IN CARDBOARD CARTON**

# STOCK PICKERS

UP TO 250KG

**Ideally suited for transporting goods in the widest array of environments these Richmond Platform Trolleys are ergonomically designed for optimum performance, maneuverability and placement of loads and work positioning.**

Heavy duty rigid plastic construction ensures longevity for both the 2 and 3 tier configurations.



SPR002



SPR007

## SPECIFICATIONS

Model Number	Platform Size (mm)	Top Shelf Height (mm)	Overall Height (mm)	Safe Working Load (kg)
SPR002FPK	(2x) 945 x 650	750	840	250
SPR007FPK	(3x) 945 x 650	750	840	250

**STOCK PICKERS ARE SUPPLIED FLATPACK IN A CARDBOARD CARTON**



# SERVICE TROLLEYS

UP TO 250KG

A highly durable and versatile trolley that can perform a variety of tasks in all service type environments (Hospitality, Medical, Catering, Function Centres, Front and Back of House) with an attractive appearance, compact size and a range of configurations to suit your needs.

Supplied standard with non marking wheels and large lipped shelves to hold various equipment and supplies. Optional bins for storage or waste removal can be safely and easily attached with an effortless clip on system. Available in black or white, 2 tier, 3 tier, 4 tier or enclosed sizes for concealing loads.



**STR002FPK**

PLATFORM SIZE: 675 x 445mm  
TOP SHELF HEIGHT: 790mm  
OVERALL HEIGHT: 955mm



**STR004FPK**

PLATFORM SIZE: 675 x 445mm  
TOP SHELF HEIGHT: 790mm  
OVERALL HEIGHT: 955mm



**STR001FPK**

PLATFORM SIZE: 920 x 515mm  
TOP SHELF HEIGHT: 790mm  
OVERALL HEIGHT: 955mm



**STR005FPK**

PLATFORM SIZE: 920 x 515mm  
TOP SHELF HEIGHT: 790mm  
OVERALL HEIGHT: 955mm



**STR006FPK**

PLATFORM SIZE: 675 x 445mm  
TOP SHELF HEIGHT: 845mm  
OVERALL HEIGHT: 1100mm



**STR008FPK**

PLATFORM SIZE: 675 x 445mm  
TOP SHELF HEIGHT: 845mm  
OVERALL HEIGHT: 1100mm



**STR003FPK**

PLATFORM SIZE: 920 x 515mm  
TOP SHELF HEIGHT: 845mm  
OVERALL HEIGHT: 1100mm



**STR007FPK**

PLATFORM SIZE: 920 x 515mm  
TOP SHELF HEIGHT: 845mm  
OVERALL HEIGHT: 1100mm



**STR010FPK**

PLATFORM SIZE: 920 x 515mm  
TOP SHELF HEIGHT: 845mm  
OVERALL HEIGHT: 1100mm



**STR015FPK**

PLATFORM SIZE: 920 x 515mm  
TOP SHELF HEIGHT: 920mm  
OVERALL HEIGHT: 1080mm



**STR017FPK**

PLATFORM SIZE: 920 x 515mm  
TOP SHELF HEIGHT: 1450mm  
OVERALL HEIGHT: 1590mm



**STR023FPK**

PLATFORM SIZE: 920 x 515mm  
TOP SHELF HEIGHT: 1645mm  
OVERALL HEIGHT: 1780mm

**HANDLE BINS  
(OPTIONAL)  
EXTRAS**



**STR150**



**STR151**



**STR153**

**SPEAK TO US FOR  
CASTOR OPTIONS  
UP TO 150mm**

ALL SERVICE TROLLEYS ARE SUPPLIED FLATPACK IN A CARDBOARD CARTON

# SERVICE TROLLEYS

UP TO 250KG

Moving effortlessly through doorways, across factory floors and around machinery a Richmond Utility Tool Trolley is an unrivalled workbench.

Tool storage, an easy access platform and a sturdy flat surfaces at a user friendly height equates to productivity. Each draw has a capacity of 20kg and optional clip on storage makes this tool trolley a must have trade companion.

Richmond's Lockable Utility Trolley is a durable low maintenance solution that takes productivity directly to the worksite. Available with a range of different wheel options for different environments and clip on bins for storage and water removal.



STR121FPK



STR122FPK

## SPECIFICATIONS

Model Number	Number of Tiers	Platform Size (mm)	Top Shelf Height (mm)	Handle Height (mm)	Wheel Size (mm)	Load Capacity (kg)
STR121FPK	2	675 x 445	790	955	100	250
STR122FPK	2	675 x 445	790	955	100	250

ALL UTILITY TROLLEYS ARE SUPPLIED FLATPACK IN A CARDBOARD CARTON

# SERVICE TROLLEYS

UP TO 250KG

Available in 3 or 4 tier, this versatile trolley features an attractive chrome finish and sturdy plastic storage bins for the safe transport of goods and easy access.

Ideally suited to office, retail, medical, beauty salon and hair salons, Richmond Service Carts are an economical solution for convenience, productivity and efficiency.



STR013FPK



STR011FPK

## SPECIFICATIONS

Model Number	Number of Tiers	Platform Size (mm)	Deck Heights (mm)	Handle Height (mm)	Wheel Size (mm)	Load Capacity (kg)
STR011FPK	3	500 x 405	950	1055	75	250
STR013FPK	4	500 x 405	1185	1290	75	250

ALL SERVICE CARTS ARE SUPPLIED FLATPACK IN A CARDBOARD CARTON



# ROLL CAGES

UP TO 600KG



**2 SIDED ROLL CAGE**  
**RCR001**

EXTERNAL  
DIMENSIONS: 720x810x1650mm  
TUBE DIAMETER: Ø20x2  
WIRE DIAMETER: Ø8 & Ø6  
WEIGHT: 28kg  
LOAD CAPACITY: 600kg



**3 SIDED ROLL CAGE**  
**RCR002**

EXTERNAL  
DIMENSIONS: 740x830x1700mm  
TUBE DIAMETER: Ø19x2  
WIRE DIAMETER: Ø10 & Ø6  
WEIGHT: 38.5kg  
LOAD CAPACITY: 600kg



**4 SIDED ROLL CAGE**  
**RCR003**

EXTERNAL  
DIMENSIONS: 740x830x1700mm  
TUBE DIAMETER: Ø19x2  
WIRE DIAMETER: Ø10 & Ø6  
WEIGHT: 45.7kg  
LOAD CAPACITY: 600kg



**SECURITY ROLL CAGE**  
**RCR004**

EXTERNAL  
DIMENSIONS: 740x830x1700mm  
TUBE DIAMETER: Ø19x2  
WIRE DIAMETER: Ø3  
WEIGHT: 61kg  
LOAD CAPACITY: 600kg



**WAREHOUSE ROLL CAGE**  
**RCR005**

EXTERNAL  
DIMENSIONS: 600x800x1450mm  
LOAD CAPACITY: 600kg



**FOLDED STORAGE  
POSITION ALLOWS  
FOR EASY NESTING  
& TRANSPORTATION**

# WHEELBARROWS

UP TO 200KG



WBR001



WBR022



WBR042



MBR061

## SPECIFICATIONS

Model Number	Volume (L)	Tray Type	Tyre Size	Wheel Rim	Wheel Code	Wheel Type	Load Capacity (kg)
LANDSCAPER'S BARROW							
WBR004	100	Plastic	4.00-8	Steel	PN1608	Pneumatic	150
WBR001	100	Plastic	16x6.50-8	Plastic	PN1610	Pneumatic	150
WBR002	100	Plastic	16x6.50-8	Plastic	PF1628	Puncture Proof	150
TRADIE'S BARROW							
WBR021	100	Steel	4.00-8	Steel	PN1608	Pneumatic	200
WBR020	100	Steel	16x6.50-8	Plastic	PN1610	Pneumatic	200
WBR022	100	Steel	16x6.50-8	Plastic	PF1628	Puncture Proof	200
BRICKIE'S BARROW							
WBR042	100	HD Steel	4.00-8	Steel	PN1608	Pneumatic	200
WBR040	100	HD Steel	16x6.50-8	Plastic	PN1610	Pneumatic	200
WBR041	100	HD Steel	16x6.50-8	Plastic	PF1628	Puncture Proof	200
MULCH BARROW							
MBR061	130	Plastic	16x6.50-8	Steel	-	Pneumatic	150







# ATV TRAILER

Designed to connect to either a ride-on mower or ATV, this lightweight trailer has many uses whether you are a hobby farmer, garden supply business, sporting club or just simply looking for an easier, hassle free way of moving a load.

## HIGH DENSITY VIRGIN MATERIAL TRAY

High strength and lightweight

## WIDE PNEUMATIC WHEEL

Optimised for use on wet and muddy terrain

## NEW DESIGN DRAW BAR

**EXTRA long** draw bar makes maneuvering, reversing and connecting a breeze

## EASY ATTACHMENT

## QUICK RELEASE LEVER

To tilt tray for easy emptying

## HEAVY DUTY FRAME

**EXTRA strong** RHS steel frame construction

Load Capacity	Tray Volume	Tray Size (L x W x H)	Overall Height	Tyre Size	Draw Bar Length	Product Code
200KG	240L	1200 x 940 x 300mm	700mm	16x6.50-8	830mm	ATR001FPK



ATV TRAILERS ARE SUPPLIED FLATPACK IN A CARBOARD CARTON



# PALLET TRUCKS

UP TO 2500KG

In 1961 Richmond decided that Pallet Trucks should be painted yellow and fifty years later that is still the case. Renowned for providing exceptional maneuverability whilst providing maximum operator comfort, Richmond Pallet Trucks are engineered for longevity in all industrial workplaces.

Providing uncompromised productive use with industry leading construction combined with easy access entry and exit rollers specifically designed for Australian hardwood pallets. Preventing physical exertion of the operator, our range of Pallet Trucks is built tough for loads up to 2500kg. Two standard widths are available. Steel frame reinforced in all the right places, high quality hydraulics combined with 56 years of pallet truck experience.



## SPECIFICATIONS

Model Number	Max Fork Height (mm)	Min Fork Height (mm)	Fork Length (mm)	Fork Width Overall (mm)	Individual Fork Width (mm)	Safe Working Load (kg)
PTR001	200	85	1150	680	160	2500
PTR002	200	85	1150	530	160	2500
PTR003	200	85	1150	680	160	2000
LOW PROFILE MODELS						
PTR005	170	55	1220	680	160	2000
PTR009	170	55	1150	540	160	2000
PTR010	170	64	1150	540	160	2000



Standard  
PTR001



Galvanized  
PTR003



Low Profile  
PTR005

SPARE PARTS  
AVAILABLE



NY417



PU326



PU8074



UP TO 1500KG

# PALLET TRUCK

## SEMI ELECTRIC WALK BEHIND

Compact design for use in confined spaces, such as narrow aisled retail stores and warehouses, this electric driven pallet truck significantly reduces operator strain in continuous or hard to move operations.

Ideal for transport and logistic trucks with tail gates to move loads around and maximise productivity. Richmond semi-electric walk behind pallet truck comes with an inbuilt charge, powerful traction, industry leading hydraulic pump and an emergency brake.



PTR004

## SPECIFICATIONS

Model Number	Max Fork Height (mm)	Min Fork Height (mm)	Fork Length (mm)	Fork Width Overall (mm)	Power Unit	Safe Working Load (kg)
PTR004	200	85	1220	685	38Ah	1500

# PALLET TRUCK

## ELECTRIC POWERED

UP TO 1500KG

Manufactured with durability in mind, compact for tight spaces with full electric propulsion and lifting, Richmond's Battery Electric Pallet Trucks provide a solution for fast paced environments.

Powerful traction combined with advanced features all controlled by hand to fit any transporting up to 1500kg.



PTR006

## SPECIFICATIONS

Model Number	Max Fork Height (mm)	Min Fork Height (mm)	Fork Length (mm)	Fork Width Overall (mm)	Power Unit	Safe Working Load (kg)
PTR006	195	75	1220	650	2 x 12V/80A	1500

# tugR BATTERY ELECTRIC TUG

UP TO 1500KG

Reducing man power and increasing the speed of moving loads, Richmond's 1500kg Tug will create significant productivity gains in your workplace. The styling of an electric Pallet Truck combined with a hydraulic draw bar ideally suited to tow ball attachments can be fitted securely to rolling trolleys and platforms, giving the operator complete control of the Tug.

With a smooth variable speed control, powerful 1200 watt motor, robust drive wheel and polyurethane wheels this unit can push/pull indoors and outdoors over a range of different surfaces.

Richmond's 1500kg Tug can be used in a number of industrial manufacturing industries such as glass manufacturing, steel works, automotive, RV markets and boat building



TTR002

## SPECIFICATIONS

Model Number	Height (mm)	Handle Height (mm)	Width (mm)	Length (mm)	Battery Voltage	Load Capacity (kg)
TTR002	680	1250	700	796	24V, 70Ah	1500

## FEATURES

- 800 Watt 24V DC Motor
- 70ah/24V battery power pack
- Variable speed hand controller
- Programmable speed and brake settings
- Towing loads up to 1500kg
- Automatic electrical brake
- Battery gauge
- Emergency stop bump switch

**RICHMOND CAN CUSTOM MANUFACTURE ATTACHMENTS TO SUIT THE SPECIFIC INDUSTRIAL APPLICATION, FURTHER IMPROVING PERFORMANCE**

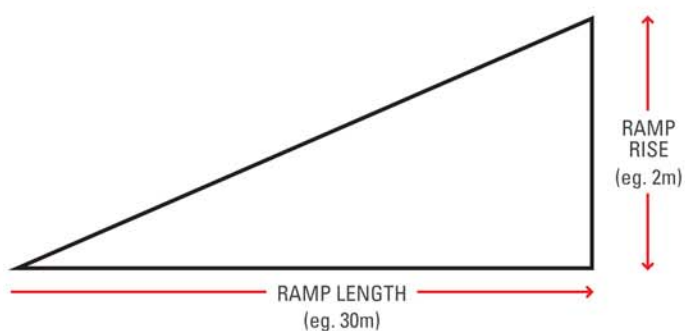




# tugR

# SPECIFICATIONS

<b>MODEL</b>	TTR001-PN / TTR001-PU
<b>MOTOR</b>	24VDC, 400W
<b>LOAD CAPACITY</b>	TTR001-PN: Max 500kg / TTR001-PU: Max 1000kg (see Load vs Slope chart below for capacity on ramps)
<b>BATTERY</b>	2 x 12V 24Ah
<b>CHARGER</b>	24V 3A on board
<b>CONTROLLER</b>	Programmable 70A
<b>TYRES</b>	Solid Polyurethane 250x80 (grey) Pneumatic 4.10x3.50-4 (grey)
<b>WEIGHT</b>	80kg (without gripper)
<b>HEIGHT</b>	870mm (with handle folded down) 1100mm (with handle in operational position)
<b>WIDTH</b>	505mm (at wheels), 320mm (across frame)
<b>STANDARD GRIPPER</b>	Max gripper opening 70mm, closes to 30mm. Adjustable to 4mm closed width
<b>HORN</b>	Beeper type



$$\text{RAMP GRADIENT} = \frac{\text{RAMP RISE}}{\text{RAMP LENGTH}} = \frac{2}{30} = \frac{1}{15}$$

## tugR CAPACITY

Ramp Gradient	Pneumatic Wheel Capacity	Polyurethane Wheel Capacity
1/10	250kg	250kg
1/15	300kg	500kg
1/20	375kg	750kg
FLAT	500kg	1000kg

\* All load capacities listed for ideal operating conditions

# tugR

## REAL PULLING POWER



**EMERGENCY BRAKE**



**ONBOARD CHARGER**



**NON-MARKING  
WHEELS**



**SAFETY HORN**



**ADJUSTABLE HANDLE**



**RANGE OF ADJUSTABLE GRIPPERS  
AVAILABLE - CUSTOMISED FOR YOUR  
APPLICATION**

**1 IN 3**



**WORKPLACE INJURIES  
ARE CAUSED BY  
MANUAL HANDLING**

## STAY SAFE AT WORK

- > Help eliminate injury and increase productivity by using Richmond's tugR to move loads in your workplace.
- > Load rated up to 1000kg, the tugR can tow or drive forward almost any rolling platform, cage or trolley.



**INCREASE  
PRODUCTIVITY**



**SAFE HANDLING  
UP TO 1000KG \***



# SKID LIFTERS

These machines are designed to lift open floored pallets and stillages and are not suitable for Australian hardwood pallets. The real advantage is that the forks can be lifted to bench height, greatly facilitating the load/unload function.

The material handling process is heavily dependant on operator comfort and ease of operation, Richmond's Skid Lifter reduces the operator's need to bend whilst maintaining simple safe operation. Correctly positioning work surfaces via a control lever and foot pump for fast easy lifting and minimised back strain, thus improving efficiency.

A simple rugged and multifunctional machine.



SLR001

## SPECIFICATIONS

Model Number	Lowered Fork Height (mm)	Min Fork Height (mm)	Fork Length (mm)	Fork Width Overall (mm)	Safe Working Load (kg)
SLR002	85	830	1115	526	1000
SLR001	85	830	1115	690	1000



# FORK STACKER

## MINI WINCH TYPE

UP TO 80KG

Lifting into a machine or a container from a bench becomes easy with a Richmond Mini Winch Stacker. The stacker is used in workshops, offices and tight storage areas with narrow aisles.

Richmond's Mini Winch Stacker handles loads safely. The maximum 80kg load capacity is easily raised and lowered via a smart hand winch. The lifter has adjustable forks. One major advantage of a hand winch is the minimal amount of maintenance required.



FSR003

### SPECIFICATIONS

Model Number	Lifting Height (mm)	Min Table Height (mm)	Tray Size (mm)	Safe Working Load (kg)
FSR003	1250	90	300 (L) x 370 (W)	80

Note: Refer to [www.richmondau.com](http://www.richmondau.com) for load charts

# FORK STACKER

## WINCH TYPE

UP TO 180KG

This aluminum framed winch operated lifter weighs just 71kg and is designed to be transported safely in and out of a Utility or Delivery Van.

The Lifter is great for delivering white goods and boxes of all types. It has become a very popular tool at building sites getting awkward equipment out of vehicles into position. Richmond's Winch Fork Stacker is suitable for loads up to 180kg.



FSR002

NEW WINCH DESIGN

### SPECIFICATIONS

Model Number	Max Fork Height (mm)	Min Fork Height (mm)	Fork Length (mm)	Fork Width (mm)	Safe Working Load (kg)
FSR002	2500	90	520	630	180

Note: Refer to [www.richmondau.com](http://www.richmondau.com) for load charts



# FORK STACKER

## MANUAL HYDRAULIC

UP TO 400KG

Richmond's Manual Fork Stacker provides an economical solution for loads up to 400kg where occasional lifting is required.

This sturdy lifter fits through a standard door and is extremely simple to operate. Having such a machine in the workshop can pay its way in just one day. A platform is available for the forks to increase versatility.



FSR001

## SPECIFICATIONS

Model Number	Max Fork Height (mm)	Lowered Fork Height (mm)	Fork Length (mm)	Fork Width (mm)	Overall Width (mm)	Safe Working Load (kg)
FSR001	1500	85	650	210-563	590	400

OPTIONAL PLATFORM: FSR006

Note: Refer to [www.richmondau.com](http://www.richmondau.com) for load charts

# FORK STACKER

## BATTERY ELECTRIC

UP TO 400KG

Reduce fatigue, increase operator comfort, simplify movement and increase productivity – all these factors are provided with Richmond's 400kg Battery Electric Fork Stacker.

The battery electric version in a workplace environment where repetition work is common has no competitors due to its simple operation and strong battery life. Features an onboard battery charger and lockable castors to ensure rigidity. We certainly use a lot of these machines in our own manufacturing facility and they are most effective.



FSR004

## SPECIFICATIONS

Model Number	Max Fork Height (mm)	Lowered Fork Height (mm)	Fork Length (mm)	Fork Width (mm)	Battery Voltage	Safe Working Load (kg)
FSR004	1500	85	650	210-563	12V	400

OPTIONAL PLATFORM: FSR006

Note: Refer to [www.richmondau.com](http://www.richmondau.com) for load charts

# UNIVATORS

## BATTERY ELECTRIC

UP TO 150KG

Richmond's Univator is ergonomically practical and highly maneuverable. As a lightweight powered lifter the Univator is unparalleled in performance, designed to take the strain out of many lifting jobs from ground level to shoulder height.

Ideally suited to offices, laboratories, filing rooms and any confined spaces. Battery electric lifting, with removable hand control for maximum operator comfort and ease of positioning whilst being able to lift 150kg when required. It is best suited for loads up to 50kg where it can sustain a 25% duty rating.



UVR003

## SPECIFICATIONS

Model Number	Load Centre (mm)	Max Height (mm)	Min Height (mm)	Platform Size (mm)	Overall Size (mm)	Safe Working Load (kg)
UVR001	235	1550	130	520 x 460	870 x 600 x 1790	150
UVR003	235	1520	200	470 x 600	870 x 600 x 1790	150



UVR001



# FORK STACKER

## STRADDLE BATTERY ELECTRIC

UP TO 1500KG

These highly productive Lifters are the workhorses of modern factories and warehouses.

Richmond's fully Battery Electric Fork Stacker is the answer for loads up to 1500kg. Designed for multiple industries and featuring numerous safety features including parking brakes and an ergonomic hand control. A license is not required to operate these machines.



FSR009

### SPECIFICATIONS

Model Number	Max Fork Height (mm)	Min Fork Height (mm)	Fork Length (mm)	Fork Width (mm)	Outer Width of Legs (mm)	Safe Working Load (kg)
FSR009	4550	90	1150	200 - 720	1080 - 1360	1500 *

\* Maximum S.W.L. Refer to load charts for downgrading of S.W.L.

# FORK STACKER

## COUNTER BALANCED BATTERY ELECTRIC

UP TO 1300KG

A Counter Balanced Fork Stacker provides workplace solutions across numerous applications. By eliminating the straddle legs these lifters can function just like a fork lift, but in very confined spaces. They are also permitted to work in pedestrian areas where forklifts are banned.

Richmond's Counter Balanced Fork Stacker ensures safety for precision load placement and picking where maneuverability is paramount. Telescopic reach multiplies the number of uses of this machine. Pedestrian operated featuring a powerful 24V Battery pack makes this piece of machinery an ideal industry companion. Perfect for container loading or unloading.



FSR010

### SPECIFICATIONS

Model Number	Max Fork Height (mm)	Min Fork Height (mm)	Fork Length (mm)	Fork Width (mm)	Load Centre (mm)	Safe Working Load (kg)
FSR010	2950	50	950	200-720	600	1300 *

\* Maximum S.W.L. Refer to load charts for downgrading of S.W.L.

# TABLE LIFTERS

## FOOT OPERATED

UP TO 500KG

The Richmond Table Lifter is essentially a 4 wheel hand trolley where the platform raises and lowers. It is a device employing a hydraulically powered scissor mechanism to raise or lower the table. This lifter has a multitude of uses in workshops warehouses and despatch departments. Each lifter is fitted with lockable castors and is operated with a foot controlled hydraulic pump.

They are designed to get what is on the table to a comfortable working height. The design ensures smooth lifting and the lowering speed is fully adjustable via a hand operated valve. Richmond Manual Single Scissor Table Lifters are engineered to accommodate work positioning and reliability with every lift. High quality castors for transporting to any area where the ultimate in maneuverability and durability is required.



TLR002

## SPECIFICATIONS

Model Number	Table Size (mm)	Max Table Height (mm)	Min Table Height (mm)	Handle Height (mm)	Safe Working Load (kg)
TLR001	700 x 450	755	265	1000	150
TLR002	850 x 500	910	330	990	300
TLR003	850 x 500	910	390	990	500
DOUBLE SCISSOR MODEL					
TLR012	920 x 520	1500	435	990	350
STAINLESS STEEL MODEL					
TLR004	830 x 500	910	330	950	200



TLR012



TLR003



TLR004



# TABLE LIFTER

## BATTERY ELECTRIC DOUBLE SCISSORED

UP TO 500KG

Richmond's Battery Electric Drive and Lift table provides heavy duty performance for demanding industries. Commonly used in manufacturing, processing, warehousing applications where effortless movement from one location to another is required. The combination of a powered drive and dual scissor lift platform reduces back strain whilst providing uncompromised maneuverability, ideal for positioning around work stations and racking systems.

Lifting to the desired height is achieved by a simple press of a button by the operator, the ergonomically designed control and steering control handles makes light work in any situation.

To transfer from table to work station or work station to table is aided by positioning of transfer rollers at the front of the table that allows for safer sliding movement in transferring of goods.

Included are; safety and emergency brakes, horn, lockable 150mm poly on nylon swivel castors and an easy to read LED battery meter display. This product is equipped with a full onboard plug in charger for added convenience.



TLR045

### SPECIFICATIONS

Model Number	Table Size (mm)	Max Table Height (mm)	Min Table Height (mm)	Lifting Time (sec)	Battery Voltage	Safe Working Load (kg)
TLR045	1020 x 610	1720	470	20	2 x 12V, 40Ah	500

# PLATFORM TROLLEY

## BATTERY ELECTRIC DRIVEN

UP TO 500KG

Ideally suited to high turnover warehouses, stock transfers and fast moving industrial environments where constant transport of goods is required over varying distances, Richmond's Powered Platform Trolley can provide the solution.

The powered drive and flat bed design allows the operator easy loading and unloading from the non slip deck. The combination of poly on nylon swivel-wheeled castors and pneumatic drive wheels provides endless maneuverability and heavy duty use on a multiple of floor surfaces.

Features include safety and emergency brakes, horn and easy to read LED battery meter display. This product is equipped with a full onboard charger for convenience.



PFR016

### SPECIFICATIONS

Model Number	Platform Size (mm)	Platform Height (mm)	Handle Height (mm)	Safe Working Load (kg)
PFR016	1390 x 760	330	1080	500

# TABLE LIFTERS

## SINGLE SCISSOR POWERED

UP TO 4000KG

When the weight comes on, these stationary tables are built for the task. Heavy duty fabrication and design, 24V hand control and 3 phase power supply gives Richmond's Table Lifters the grunt for commercial applications.

Equipped with multiple safety features, the lift tables facilitate handling and lifting up to 4000kg. Each table is fitted with safety stop bars around the bottom of the tables. If disturbed they stop all table movement.

Can also be fitted with safety skirts.



TLR023

## SPECIFICATIONS

Model Number	Platform Size (mm)	Raised Height (mm)	Lowered Height (mm)	Base Frame Size (mm)	Lift Speed (sec)	Safe Working Load (kg)
TLR023	1300 x 820	1000	205	1240 x 630	20	1000
TLR024	1600 x 1000	1000	205	1240 x 630	20	1000
TLR025	850 x 1300	1050	230	1220 x 785	20	2000
TLR028	1000 x 1600	1050	230	1220 x 785	20	2000
TLR026	1000 x 2000	1300	250	1600 x 785	45-50	2000
TLR029	1200 x 1700	1100	240	1600 x 900	40	4000
TLR027	1200 x 2000	1100	240	1600 x 900	20	4000

# TABLE LIFTER

## DOUBLE SCISSOR POWERED

UP TO 2000KG

These stationary tables are built for the task. Heavy duty fabrication and design, 24V hand control and 3 phase power supply gives Richmond's Table Lifters the grunt for commercial applications.

Equipped with multiple safety features the lift tables facilitate handling and lifting up to 2000kg. When lifting to a greater height, the double scissor is the one to choose. Each table is fitted with safety stop bars around the bottom of the Tables. If disturbed they stop all Table movement.

The Lifter is suitable for many commercial/industrial uses including Dock Lifts, Good Lifts, Manufacturing, Warehouse Lifting, and Mezzanine Lifts. Richmond's Double Scissor Table Lifter can match and exceed constant daily demands. The Lifter is supplied with a 10Amp 3 phase plug and removable lifting eyes to facilitate safe and accurate installation.



TLR043

## SPECIFICATIONS

Model Number	Platform Size (mm)	Raised Height (mm)	Lowered Height (mm)	Base Frame Size (mm)	Lift Speed (sec)	Safe Working Load (kg)
TLR043	1300 x 850	1780	360	1220 x 785	70-80	2000



# LOAD SKATES

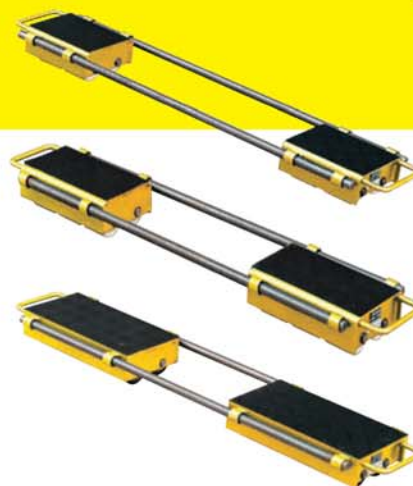
## ADJUSTABLE

UP TO 24T

If you are looking to move heavy objects or machinery Richmond Adjustable Skates are the answer you seek.

Suitable for loads up to 24 tonne and adjustable these skates are fitted with handles for easy positioning once the load is lifted using either a roller crow bar or a jack. Fitted with a rubber surfaced non-slip platform that protects and stabilizes the load.

**Note:** Skates are sold in pairs.



LSR001

LSR002

LSR004

## SPECIFICATIONS

Model Number	Roller Type	No. Of Rollers	Roller Size (mm)	Skate Dimensions (mm)	Safe Working Load (tonnes)
LSR001	Nylon	8	85 x 90	300 x 250 x 115	6
LSR002	Nylon	12	85 x 90	360 x 220 x 115	12
LSR004	Steel	16	85 x 90	360 x 220 x 115	24

# LOAD SKATE KITS

UP TO 60T

Designed and engineered to perform a specialist task Richmond's Skate Kit provides an uncompromising service when installing, moving or working on heavy loads up to 60 tonne.

With precise steering control, maneuvering large machinery or heavy items has never been safer or easier. Enclosed in their own storage container on wheels Skate Kits are an economical solution for short transport distances.



LSR005

## SPECIFICATIONS

Model Number	Support Length (mm)	Support Width (mm)	Overall Height (mm)	Roller Diameter (mm)	Swivel Top (mm)	Safe Working Load (tonnes)
LSR003	120	120	108	ø18	ø130	20
LSR005	120	120	117	ø24	ø130	30
LSR006	130	130	140	ø30	ø150	60

### IMPORTANT!

- All maximum carrying capacities are based on use on steel surfaces, which withstands the pressure of the chain roller. For safety, the carrying capacities in complete sets are calculated so that 2 roller skates could support the full load on uneven surfaces.
- The track surface is important for the safe transportation of the load, not the carrying capacity of the roller skate. Tiles are unsuitable. Movement on tarmac and concrete is restricted. In these cases it is recommended to put a minimum steel plate of 10mm thickness underneath.
- Due to little effort required to overcome the rolling resistance (4-7% of the total load), precautionary measures must be taken for use on inclined surfaces.

# CONVEYOR ROLLERS

UP TO 120KG

Suitable for loads up to 120kg, Richmond Gravity Conveyor Rollers allow free moving, efficient and safe transportation of goods at any operational stage of a conveyor line. Producing movement via natural forces, gravity conveyors are an economical material handling solution used in many industries for simplicity and functionality.

Spring loaded shafts not only provide hassle free maintenance and simple installation they also ensure secure attachment to the conveyor frame (channel) maximizing roller and bearing function and performance. Rollers are available in zinc plated steel, nylon and stainless steel for wash down applications.

It is recommended that there be a minimum of three rollers under the goods to being transported at any one time. The size of the object being transported can help determine the roller pitch on your conveyor system applying the three roller rule.

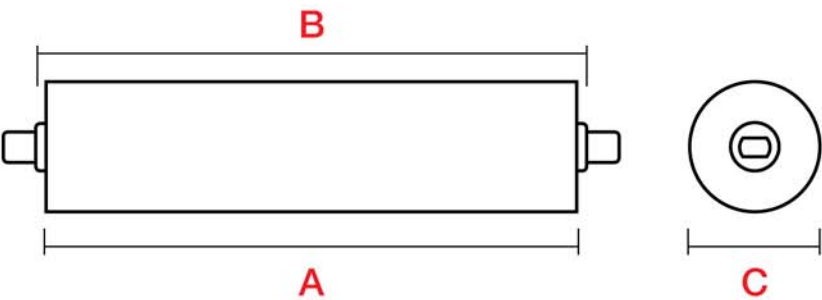
Richmond can custom manufacture gravity conveyor rollers to length, diameter and shaft requirements.



## SPECIFICATIONS

Model Number	Face Width (mm) A	Over Bearing Width (mm) B	Diameter (mm) C	Material Type (mm)	To Suit Overall Conveyor Width (mm)	Load Capacity (kg)
CRR003	217	227	50	Steel	290	120
CRR500	206	227	48	Nylon	290	40
CRR007	377	387	50	Steel	450	120
CRR501	366	387	48	Nylon	450	30
CRR014	527	537	50	Steel	600	120
CRR502	516	537	48	Nylon	600	20

RICHMOND MANUFACTURE ROLLERS TO SIZE - CONTACT OUR TECHNICAL SALES STAFF FOR MORE INFO!



10MM SHAFT WITH 8MM FLATS



# CONVEYOR ROLLER FAX ORDER FORM

COMPANY :	FAX :
ATTN :	FROM :
ORDER No. :	DATE :

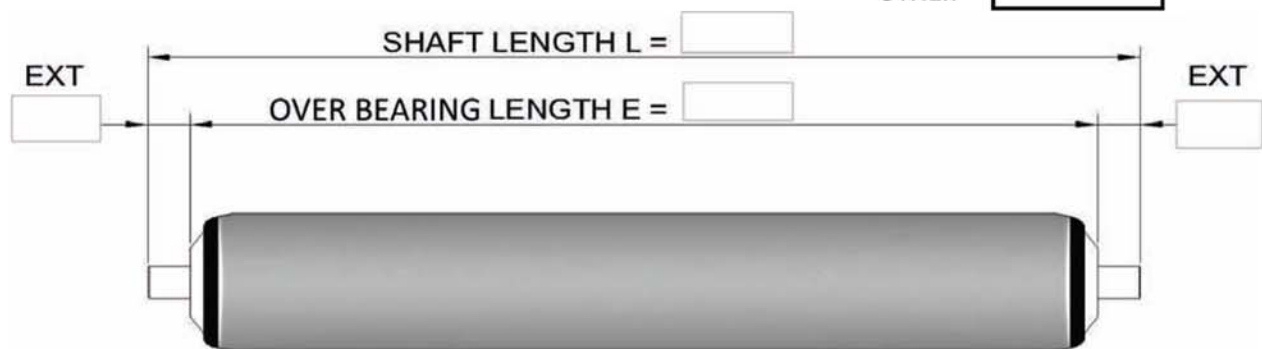
## ROLLER CONFIRMATION SHEET

### ROLLER SPECIFICATION

TUBE DIAMETER	<input type="text"/> mm
WALL THICKNESS	<input type="text"/> mm

### TUBE SPECIFICATION

M/S GALVANISED	<input type="checkbox"/>
M/S ZINC PLATED	<input type="checkbox"/>
M/S BLACK	<input type="checkbox"/>
STAINLESS STEEL	<input type="checkbox"/>
PVC	<input type="checkbox"/>
OTHER	<input type="checkbox"/>



### SHAFT SPECIFICATION

'X' REPRESENTS QUOTED OPTION

	<input type="checkbox"/>		<input type="checkbox"/>
	<input type="checkbox"/>		<input type="checkbox"/>
	<input type="checkbox"/>		<input type="checkbox"/>
	<input type="checkbox"/>		<input type="checkbox"/>
THREAD : M <input type="text"/>		THREAD : M <input type="text"/>	

### SHAFT MATERIAL

MILD STEEL	<input type="checkbox"/>
ZINC PLATED	<input type="checkbox"/>
STAINLESS	<input type="checkbox"/>
OTHER	<input type="checkbox"/>

### SHAFT FIXING

SPRING LOADED	<input type="checkbox"/>
LOOSE	<input type="checkbox"/>
FIXED	<input type="checkbox"/>
NO SHAFT	<input type="checkbox"/>

### BEARING DETAIL

PRECISION	<input type="checkbox"/>
SEMI PRECISION	<input type="checkbox"/>
M/S or S/S	<input type="checkbox"/>

QTY :

QUOTED PRICE (EX GST)

TOTAL \$

### GENERAL NOTES :

PLEASE SIGN AND FAX OR E-MAIL BACK FOR YOUR APPROVAL.

SIGNED : ..... PRINT NAME : ..... DATE : ...../...../.....

NOTE: MANUFACTURE OF THE ROLLERS WILL NOT COMMENCE UNTIL A SIGNED COPY IS RETURNED WITH COMPANY ORDER NUMBER.

# CONVEYORS

## GRAVITY

Gravity roller conveyors provide essential material handling free moving, efficient and safe transportation of goods at any operational stage of a conveyor line on a daily basis.

Gravity roller conveyors are an economical solution ideal for moving heavy and non standard shaped items along processing and packaging lines. Providing flexibility with innovative interlocking sections supplied as standard in 1.5 and 3m sections allowing for addition and subtraction of a conveyor line as required. Richmond Gravity Conveyors have been designed with thicker channeling, stronger cross members and a high quality powder coated finish for hard wearing and maximum rigidity over the full length of any hard working conveyor line.

It is recommended that there be a minimum of three rollers under the goods to be transported at any one time. The size of the object being transported can help determine the roller pitch on your conveyor system applying the three roller rule.

Richmond can custom manufacture gravity conveyor systems to suit your length, width, pitch and roller requirement.

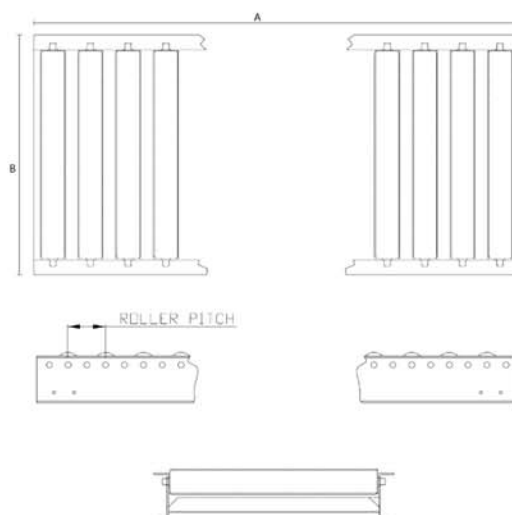
## SPECIFICATIONS

Model Number	Length (mm) (A)	Pitch (mm)	Overall Width (mm) (B)	Number of Rollers	Roller Material
CGR070	1500	75	290	20	Steel
CGR071	1500	75	290	20	Nylon
CGR072	1500	115	290	13	Nylon
CGR073	1500	150	290	10	Steel
CGR074	1500	150	290	10	Nylon
CGR075	3000	75	290	40	Steel
CGR076	3000	75	290	40	Nylon
CGR077	3000	115	290	26	Steel
CGR078	3000	115	290	26	Nylon
CGR079	3000	150	290	20	Steel
CGR080	3000	150	290	20	Nylon
CGR081	1500	75	450	20	Steel
CGR082	1500	75	450	20	Nylon
CGR083	1500	115	450	13	Steel
CGR084	1500	115	450	13	Nylon
CGR085	1500	150	450	10	Steel
CGR086	1500	150	450	10	Nylon
CGR087	3000	75	450	40	Steel
CGR088	3000	75	450	40	Nylon
CGR089	3000	115	450	26	Steel
CGR090	3000	115	450	26	Nylon
CGR091	3000	150	450	20	Steel
CGR092	1500	75	600	20	Steel
CGR093	1500	75	600	20	Nylon
CGR094	1500	115	600	13	Steel
CGR095	1500	115	600	13	Nylon
CGR096	1500	150	600	10	Steel
CGR097	1500	150	600	10	Nylon
CGR098	3000	75	600	40	Steel
CGR099	3000	75	600	40	Nylon
CGR100	3000	115	600	26	Steel
CGR101	3000	115	600	26	Nylon
CGR102	3000	150	600	20	Steel
CGR103	3000	150	600	20	Nylon



CGR081

FOR STANDS TO SUIT SEE PAGE 42



ROLLER SITS ABOVE CHANNEL  
STEEL ROLLER 50MM DIAMETER  
NYLON ROLLER 48MM DIAMETER

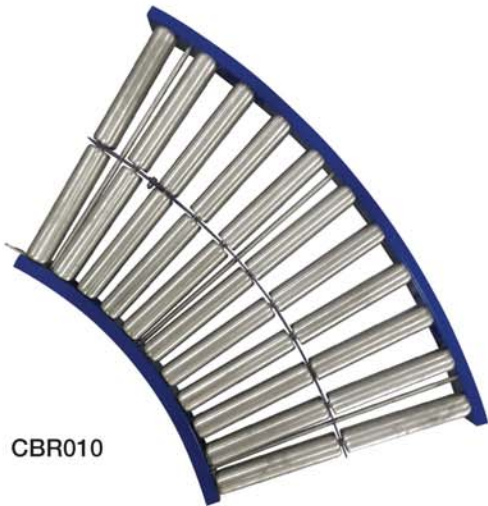


# CONVEYOR BENDS

## GRAVITY

Providing all the features of Richmond's Gravity Conveyor system, gravity conveyor bends are ideal for moving heavy and non standard items along processing and packaging lines around 45 or 90 degree bends.

Interlocking with straight conveyor sections safely whilst ensuring maximum efficiency for the goods being transported. A conveyor bend can optimize space and remove the need for discontinuation and manual handling from a conveyor system. Richmond Conveyor Bends have been designed to be self tracking and free moving in all operational warehouse environments.

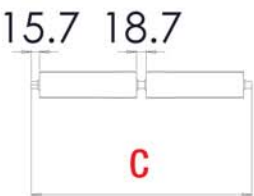
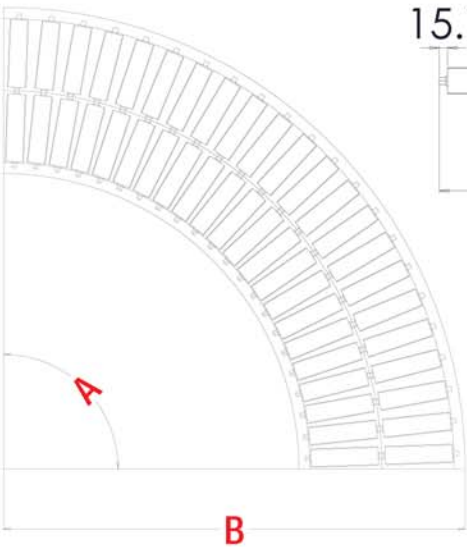


CBR010

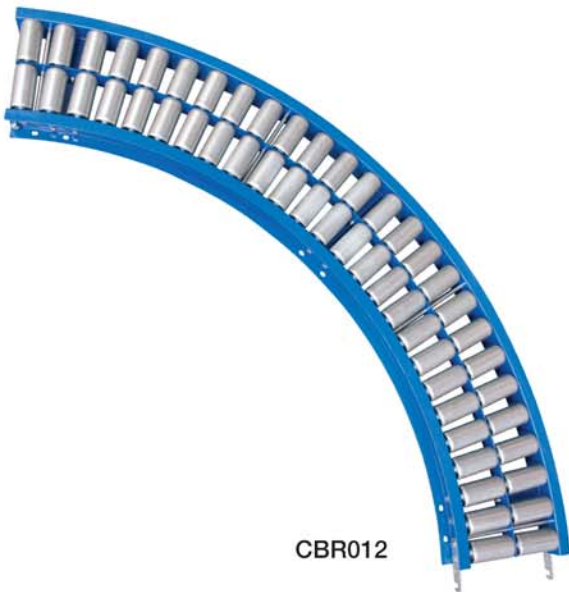
### SPECIFICATIONS

Model Number	Angle Degree (A)	Outside Radius (mm) (B)	Overall Frame Width (mm) (C)	Roller Material
CBR009	45	1250	290	Steel
CBR012	90	1250	290	Steel
CRR011	45	1250	450	Steel
CBR008	90	1250	450	Steel
CBR010	45	1410	600	Steel
CBR007	90	1410	600	Steel

RICHMOND CUSTOM MANUFACTURE CONVEYOR SYSTEMS



ROLLER SITS ABOVE CHANNEL  
STEEL ROLLER 50MM DIAMETER  
ROLLER PITCH 75MM



CBR012

FOR STANDS TO SUIT SEE PAGE 42

# CONVEYOR FRAMES



**CGR104**  
 LENGTH: 1500mm  
 WIDTH: 290mm  
 CROSS MEMBERS: 3



**CGR105**  
 LENGTH: 3000mm  
 WIDTH: 290mm  
 CROSS MEMBERS: 5



**CGR106**  
 LENGTH: 1500mm  
 WIDTH: 450mm  
 CROSS MEMBERS: 3



**CGR108**  
 LENGTH: 3000mm  
 WIDTH: 450mm  
 CROSS MEMBERS: 5



**CGR109**  
 LENGTH: 1500mm  
 WIDTH: 600mm  
 CROSS MEMBERS: 3



**CGR111**  
 LENGTH: 3000mm  
 WIDTH: 600mm  
 CROSS MEMBERS: 5

# CONVEYOR STANDS

Manufactured from a high quality pressed metal with a hard wearing attractive powder coated finish, Richmond's Adjustable Conveyor Stands provide a rigid footing for Gravity Conveyor Systems.

An adjustable height range of 715 to 1015mm provides flexibility in application and operator comfort. Richmond advises that conveyor stands whilst free standing must be securely fixed into position.

## SPECIFICATIONS

Model Number	Elevation Range (mm)	Width (mm)	To Suit Overall Conveyor Width (mm)
CSR003	715 - 1015	230	290
CSR001	715 - 1015	390	450
CSR002	715 - 1015	540	600



CSR003

**levelR**  
 LEVELLING FEET  
 AVAILABLE TO SUIT  
 SEE PAGE 61 FOR DETAILS

### IMPORTANT!

IT IS RECOMMENDED THAT CONVEYOR STANDS - WHILST FREE STANDING - BE SECURELY FIXED INTO POSITION. IF YOU REQUIRE FREE MOVEMENT OF YOUR RIGID CONVEYOR SYSTEM, SPEAK TO RICHMOND FOR A SOLUTION



# CONVEYORS

## POWERED & NON POWERED LINE SHAFT SECTIONS

**Richmond Line Shaft Powered Conveyor Systems significantly reduce material handling removing difficult and time consuming operations for many types of businesses and industries alike.**

Powered line shaft conveyor systems hold significant advantages over gravity conveyor systems due to their fast and effective mode of transportation, the ability to alter speeds, develop better workplace practices, smarter more productive assembly, picking, packaging and movement around work stations and from multiple points as continuous movement minimises accumulation.

Suited to a wide variety of applications including warehousing flow which is maximized by controlling movement, reducing labor costs and greatly increasing productivity. Richmond can also design and install powered line shaft systems featuring transfer stations, bends and merges as well as personnel gates for easy access.

## SPECIFICATIONS

### POWERED LINE SHAFT SECTIONS

Model Number	Length (mm)	Pitch (mm)	Speed (metres/min)	Overall Width (mm)	Roller Material	Roller Width (mm)
CPR004	3000	75	5 - 25	450	Steel	50
CPR005	3000	75	5 - 25	600	Steel	50

### NON POWERED LINE SHAFT SECTIONS

Model Number	Length (mm)	Pitch (mm)	Speed (metres/min)	Overall Width (mm)	Roller Material	Roller Width (mm)
CPR008	1500	75	-	450	Steel	50
CPR009	3000	75	-	450	Steel	50
CPR010	1500	75	-	600	Steel	50
CPR011	3000	75	-	600	Steel	50



CPR004

# CONVEYORS

## BELT



Container Loading/Unloading Conveyors  
CPR006

Commonly used in slow moving assembly, picking or packing lines a Richmond Belt Conveyor provides a smooth and controllable transportation of goods.

Belt Conveyors can be configured to suit the directional flow of goods including inclining, declining and curved paths and are designed to suit most applications. The advantage of a belt conveyor is the flat surface of the conveyor belt which allows for any object of suitable width to be conveyed.

## SPECIFICATIONS

Model Number	Length (mm)	Overall Width (mm)	Belt Width (mm)	Speed (per min)	Height (mm)
CPR001	3000	660	600	5 - 25	900
CPR003	R1195	695	600	5 - 25	900
CPR006	POA	POA	POA	POA	POA



Incline Belt Conveyors  
CPR001



Curved Belt Conveyor Sections  
CPR003



# CONVEYORS

## FLEX

**Bridging the gap between fixed conveyor and a faster loading/unloading process Richmond's Flex Conveyors provide the versatility and mobility to handling facilities and have been specifically designed to move goods quickly, safely and efficiently.**

Ideally suited to container loading and unloading, food processing, warehousing, shelf packing and many more repetitive applications, the flex conveyor can expand, retract and be placed into endless shapes to achieve the desired product flow.

Featuring adjustable height legs from 685 to 1000mm, lockable castors and the ability to be joined to other flex conveyors for greater reach and instant set up. Available with a skate or roller option each Richmond Flex Conveyor is designed to ensure that goods are self tracking and free moving no matter the shapes.



CFR002

## SPECIFICATIONS

Model Number	Skate Type	Width (mm)	Length (m)	Roller Diameter (mm)	Load Capacity (kg)
CFR001	Steel	400	2.4 - 6.3	50	100
CFR005	Nylon	400	2.4 - 6.3	50	60
CFR002	Steel	500	2.4 - 6.3	50	100
CFR006	Nylon	500	2.4 - 6.3	50	60
CFR003	Steel	600	2.4 - 6.3	50	100
CFR007	Nylon	600	2.4 - 6.3	50	60

# CONVEYOR

## POWERED FLEX

Giving the user continuous flow of goods, this versatile, transportable powered conveyor reduces manual handling resulting in reduced labour costs. Richmond's Powered Flex Conveyors provide the versatility and mobility and have been specifically designed to move goods quickly, safely and efficiently.

Featuring adjustable height legs from 685 to 1000mm, lockable castors and the ability to be joined to other flex conveyors for greater reach and instant set up. Fitted with a variable speed drive, safety switch and emergency stop button, Richmond's Powered Flex Conveyor is designed to ensure that goods are self tracking and free moving no matter what shape or length. Goods can be moved backward and forward as required by the operator.

Ideally suited to container loading and unloading, food processing, warehousing, shelf packing and many more repetitive applications, the flex conveyor can expand, retract and be placed into endless shapes to achieve the desired product flow.

### SPECIFICATIONS

Model Number	Width (mm)	Roller Type	Length (m)	Roller Diameter (mm)
CPR007	445	Steel	2.4 - 6.3	50





# BALL TRANSFERS

Commonly used around presses, guillotines and machining centres, Richmond's Ball Transfers enable smooth and simple transfers of objects in any direction. Multi directional movement is essential where the need to move heavy loads is paramount.

Consisting of a large load bearing roller sitting upon many smaller balls encapsulated in a cup the engineering in this design makes for a perfect transfer station from one conveyor to another. Richmond can customise ball transfer tables to suit your application whether the requirement is for a recessed transfer table or a multiple ball transfers in a designated area.



**BTR001**

LOAD CAPACITY: 45kg  
BALL DIAMETER: 25.4mm  
BALL MATERIAL: Mild Steel  
HOLE CENTRE: 70mm



**BTR003**

LOAD CAPACITY: 15kg  
BALL DIAMETER: 15.8mm  
BALL MATERIAL: Carbon Steel  
HOLE CENTRE: 33mm



**BTR005**

LOAD CAPACITY: 50kg  
BALL DIAMETER: 25.4mm  
BALL MATERIAL: Carbon Steel  
THREAD: M6 x 17mm long



**BTR006**

LOAD CAPACITY: 50kg  
BALL DIAMETER: 25.4mm  
BALL MATERIAL: Carbon Steel



**BTR020**

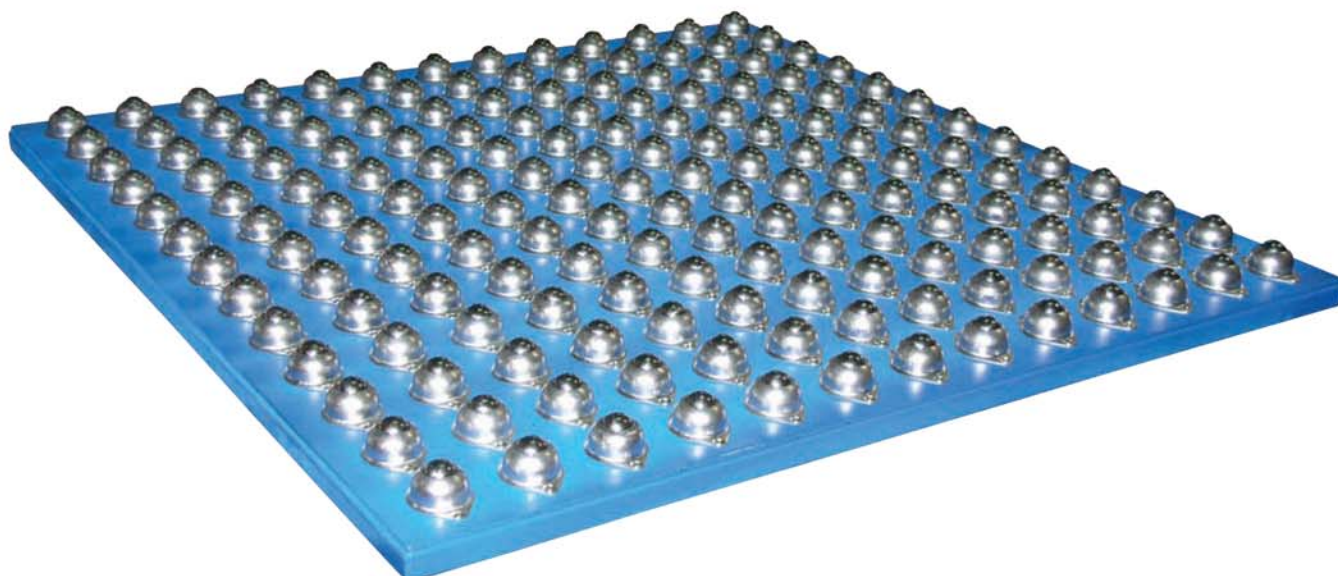
LOAD CAPACITY: 45kg  
BALL DIAMETER: 25.4mm  
BALL MATERIAL: Stainless Steel  
HOLE CENTRE: 70mm



**BTR021**

LOAD CAPACITY: 227kg  
BALL DIAMETER: 30mm  
BALL MATERIAL: Stainless Steel

**RICHMOND CAN CUSTOM DESIGN & MANUFACTURE SPECIFIC SIZED TRANSFER TABLES TO SUIT YOUR REQUIREMENTS**



# FLOW RAIL

Flow Rail systems can be manufactured to suit each and every warehouse, gravity driven, the flow rail is ideal for applications where picking and stock turnover is frequent.

Presenting on a stock rotation basis as inventory flows on a first in first out system, Richmond's flow rails allow for more efficient operation to personnel by reducing manual handling. Easily incorporated into racking or custom framing flow rail can provide unlimited solutions in the manufacturing industry.

Setting us apart from our competitors, Richmond's Flow Rail features high quality nylon rollers that are securely riveted, thereby creating a strengthened rigid smooth operation giving consistent rollability.



FRR002

## SPECIFICATIONS

Model Number	Length (m)	Roller Diameter (mm)	Roller Width (mm)	Frame Width (mm)	Overall Height (mm)	Skate Type
FRR002	3	32	25	36	36	Nylon

# SKATE RAILS

When a higher capacity, free flowing, gravity track system is required in warehouse storage or line applications Richmond's Skate Rail is the answer.

Designed to reduce costs by relieving manual handling, guaranteed rollability in both the dual and single skate rails. This product is a heavy duty alternative to the lighter Flow Rail. Skate Rail is ideal for heavy industrial loads, pallets and larger robust cartoons.

Easily mounted and maintenance free, Richmond's Skate Rail makes for easy movement of an endless variety of products.



FRR005



FRR004



FRR003

## SPECIFICATIONS

Model Number	Length (m)	Diameter (mm)	Width (mm)	Pitch (mm)	Skate Type	Load Capacity (kg)
FRR005	3	50	16	Single 75	Nylon	700 *
FRR004	3	50	16	Single 75	Steel	1400 *
FRR003	3	50	16	Double 75	Steel	1400 *

\* Load Capacity is based on the skate rail supported every metre



UP TO 250KG

# SAFETY CAGE

The ideal solution to carry out tasks such as maintenance, stock picking and stock take, suited to two people a **Safety Cage** provides uncompromising safety and allows for an economical way to work off the ground when access to high places is required.

Richmond's Safety Cage complies with the Australian safety standard AS-2359-1, has toe boards on all sides, a self closing inward opening door with latch, hand rails and full length fork sleeves with pin attachments. Supplied flat pack, the unique collapsible design is perfect for freight and storage when not in use.

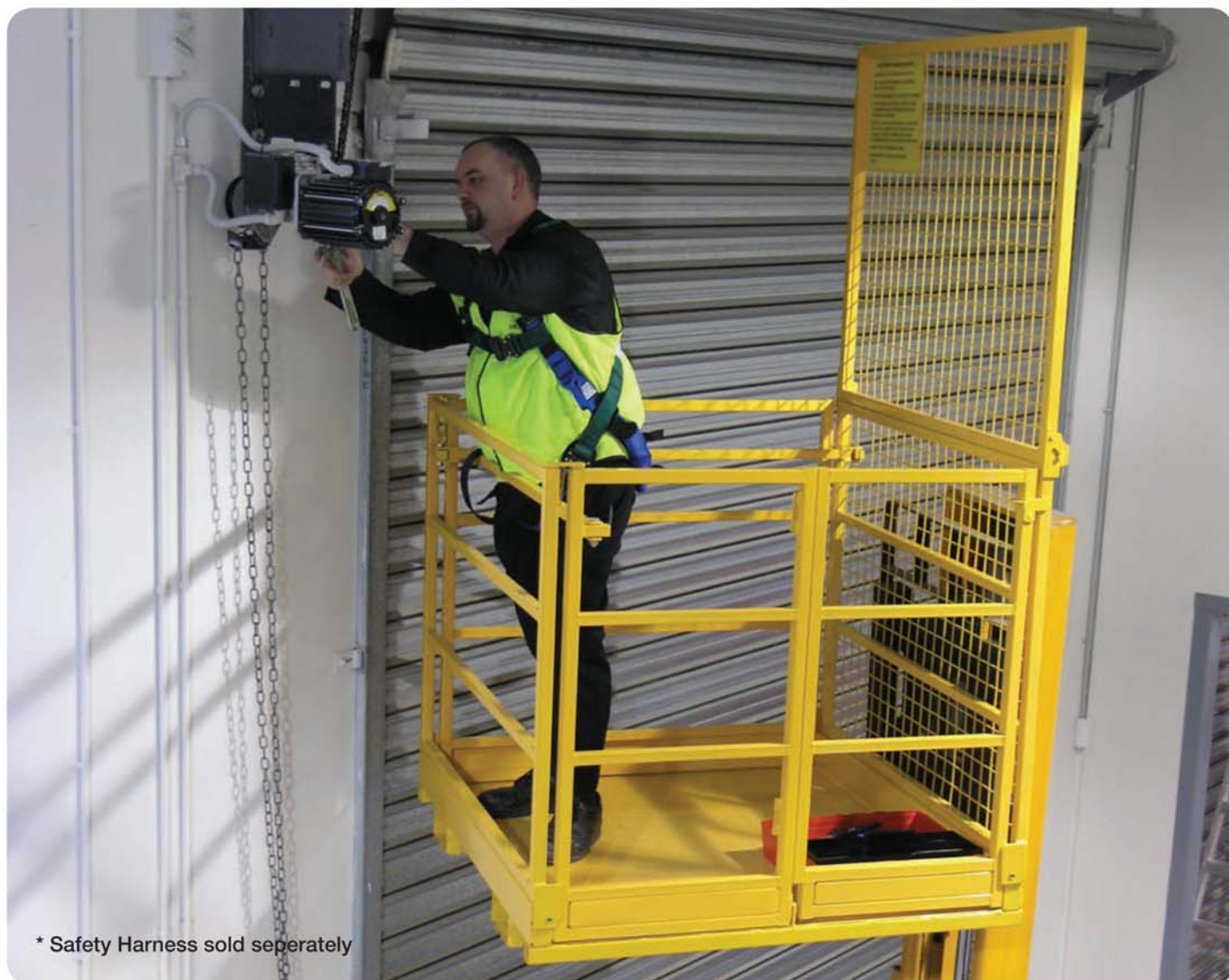


SAR001FPK

## SPECIFICATIONS

Model Number	Dimensions (mm)	Weight (kg)	Safe Working Load (kg)
SAR001FPK	1200 x 1200 x 1200	130	250

SAFETY CAGES ARE SUPPLIED FLATPACK



\* Safety Harness sold separately

# GATE KIT

## SLIDING, AC POWERED

UP TO 800KG

Richmond's Heavy Duty AC powered Gate Kit has everything you need for the DIY installation of a powered gate system. Increasing security and value to your property whilst eliminating the need to disembark from your vehicle to manually open and close a gate.

A sliding gate system is perfect for tight areas as the gate retracts along a rigid fixed track. Richmond offer a full range of gate accessories including: guide rollers and brackets, track wheels and gate track lengths (3m sections), photocells and remote control key pads.

**AC hard wiring requires installation by a qualified electrician.** Richmond can arrange the manufacture and installation of your project. Please contact your local Richmond store for more information.

### FEATURES

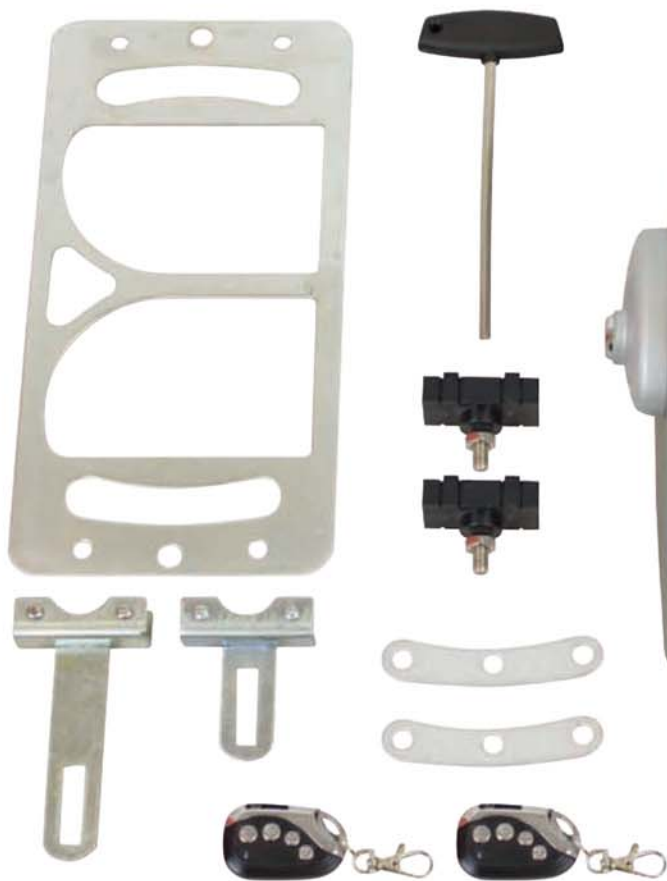
- Supply voltage AC 240V
- Operating voltage DC 24V
- Suitable for gates up to 800kg
- Manual release back-up
- 50m range remote controls
- Adjustable time and force settings
- Adjustable automatic closing
- Gate moving speed 13m/min
- IP rating IP57
- Installation hardware and DIY installation manual included
- 1 year manufacturer's warranty

### KIT CONTENTS

- 1 x motor
- 2 x remote controls
- 4 x 1MT pinion rack
- 1 x instruction manual
- Gate installation hardware

KIT NUMBER: GKR012

DC OPTION  
AVAILABLE  
GKR023



GKR013



GKR011



GKR009



# GATE KIT

## SLIING, AC POWERED

A swing gate system provides the ability for two gates to open inwards at once increasing the opening and access to the property. Richmond's Heavy Duty AC powered Gate Kit has everything you need for the DIY installation of a powered gate system.

Swing gate systems are commonly used when a traditional sliding gate system is unsuitable. Richmond offer a full range of gate accessories including: guide rollers and brackets, track wheels, spring loaded gate castors with integrated mounting, photocells and remote control key pads. Richmond can arrange the manufacture and installation of your gate.

**AC hard wiring requires installation by a qualified electrician.** Please contact your local Richmond store for more information.

## FEATURES

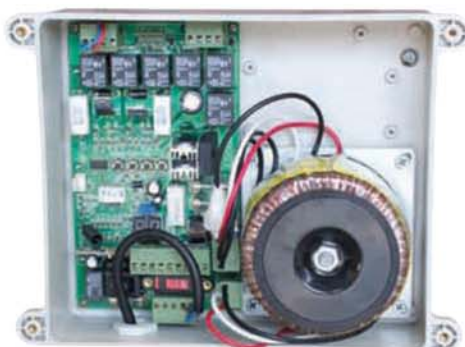
- High quality stainless steel swing arm
- Suitable for gates up to 300kg and 3.5m wide per arm
- Manual release back-up
- 50m range remote controls
- Intelligent digital control box
- Adjustable time and force settings
- Adjustable automatic closing
- Partial pedestrian opening function
- Opening time 8-12 seconds
- IP rating IP66
- Installation hardware and DIY installation manual included
- 1 year manufacturer's warranty

## KIT CONTENTS

- 2 x gate arms
- 1 x control box
- 2 x remote controls
- 1 x instruction manual
- Gate installation hardware

### KIT NUMBER: GKR015

**DC OPTION  
AVAILABLE  
GKR026**



GKR021



GKR013



GKR025

# GATE TRACK WHEELS

UP TO 420KG

Gate track available to suit track wheels



GKR002



CG463

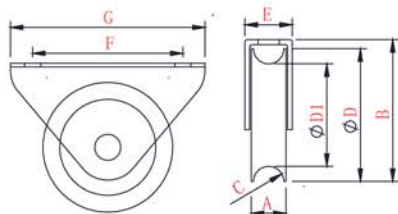
## SPECIFICATIONS

Wheel Diameter (mm)	Rim Width (mm)	Boss Width (mm)	Suit Bar (mm)	Axle Diameter (mm)	Bearing Type	Load Capacity (mm)	Wheel Code
78	28	34	20	14	Ball	350	CG361 *
88	28	34	20	14	Ball	380	CG462 *
98	28	34	20	14	Ball	400	CG463 *
116	28	34	20	14	Ball	420	CG560 *

Wheels marked \* denotes manufactured from K1045. We can custom design and manufacture to your specifications.

# EXTERNAL GATE TRACK WHEELS

UP TO 200KG



Suits 20mm round bar

Round profile track available from Richmond in 3 metre lengths with a zinc plate finish



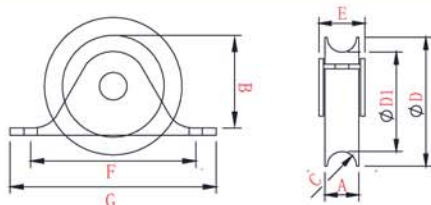
GKR001

## SPECIFICATIONS

A (mm)	B (mm)	C (mm)	D (mm)	D1 (mm)	E (mm)	F (mm)	G (mm)	Wheel Code
25	83	20	78	60	37	90	116	GKR001

# RECESS GATE TRACK WHEELS

UP TO 200KG



Suits 20mm round bar

Round profile track available from Richmond in 3 metre lengths with a zinc plate finish



GKR005

## SPECIFICATIONS

A (mm)	B (mm)	C (mm)	D (mm)	D1 (mm)	E (mm)	F (mm)	G (mm)	Wheel Code
50	50	22	78	63	32	108	135	GKR006
24	57	22	88	73	34	130	155	GKR005



# GATE ACCESSORIES

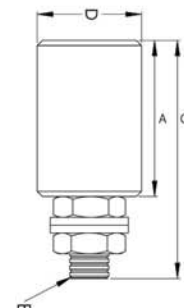
## GUIDE ROLLERS

### SPECIFICATIONS

Model Number	A (mm)	B (mm)	C (mm)	D (mm)
GKR004	40	14	76	30
GKR003	60	16	91	40



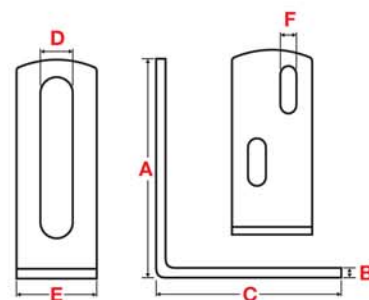
GKR003



## GUIDE BRACKETS

### SPECIFICATIONS

Model Number	A (mm)	B (mm)	C (mm)	D (mm)	E (mm)	F (mm)
GKR007	136	6	115	20	50	10



## GATE TRACKS



GKR002

FORMED STEEL FORGED TRACK IN 3 METRE LENGTHS

## PHOTO BEAMS



GKR010

## REMOTE CONTROLS



GKR013

# GATE CASTORS

## SPRING LOADED

Richmond's Spring Loaded Gate Castors are designed to make opening and closing of residential gates easier.

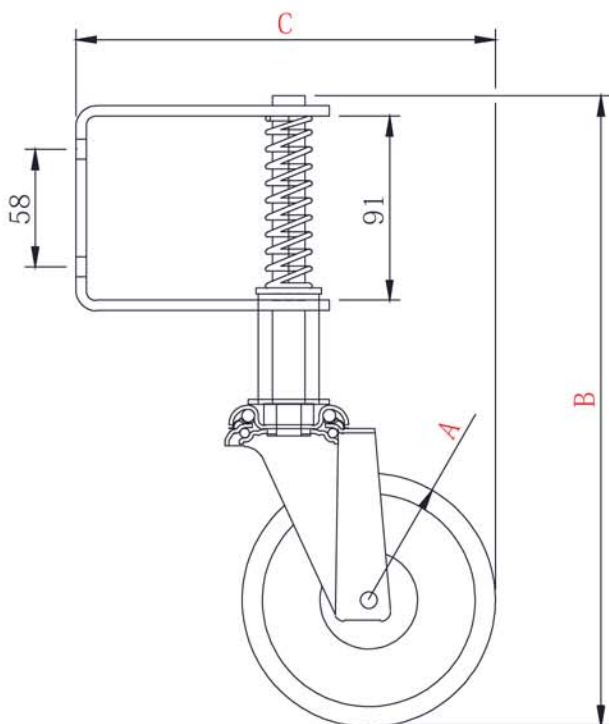
The spring loaded design provides shock absorption features specifically for use on uneven surfaces. The gate mount is integrated into the frame of the castor for easy fixing to any gate system.



S4022

## SPECIFICATIONS

Diameter (mm) <b>A</b>	Width (mm)	Wheel Type	Wheel Code	Bearing Type	Height (mm) <b>B</b>	Swivel Radius <b>C</b>	Swivel Code	Load Capacity (kg)
75	30	Reb Rubber	RR3348	Ball	259	175	S3022	20
75	30	Nylon	NY3321	Plain	259	175	S3024	20
100	30	Reb Rubber	RR4473	Ball	285	190	S4022	20
100	30	Nylon	NY4417	Plain	285	190	S4024	20
125	30	Reb Rubber	RR5573	Ball	311	205	S5022	20
125	30	Nylon	NY5517	Plain	311	205	S5024	20



S5024



S3022



## STACK & NEST CRATES

SNR003BLU 32L ● ● (N)



**SMALL STACK & NEST**  
EXT: 650 x 410 x 210  
(LxWxH)  
Material: HDPE

SNR002NAT 52L ● ● (N)



**MEDIUM STACK & NEST**  
EXT: 650 x 410 x 275mm  
(LxWxH)  
Material: HDPE

SNR008RED 68L ● ● (N)



**LARGE STACK & NEST**  
EXT: 650 x 410 x 395mm  
(LxWxH)  
Material: HDPE

SNR006NAT (N)



**STACK & NEST LID**  
EXT: 660 x 425 x 35mm  
(LxWxH)  
Material: HDPE

## RECYCLABLE STACK & NEST CRATES

SNR004BLK 32L ●



**SMALL STACK & NEST**  
EXT: 650 x 410 x 210mm  
(LxWxH)  
Recycled Polypropylene

SNR001BLK 52L ●



**MEDIUM STACK & NEST**  
EXT: 650 x 410 x 275mm  
(LxWxH)  
Recycled Polypropylene

SNR009BLK 68L ●



**LARGE STACK & NEST**  
EXT: 650 x 410 x 395mm  
(LxWxH)  
Recycled Polypropylene

SNR006BLK ●



**LARGE STACK & NEST LID**  
EXT: 660 x 425 x 35mm  
(LxWxH)  
Recycled Polypropylene

## TUB DOLLIES

TDR002FPK 200KG ●



**TUB DOLLEY**  
Platform Size: 600 x 400mm  
Platform Height: 110mm

TDR003FPK 190KG ●



**RECYCLED TUB DOLLEY**  
Platform Size: 615 x 405  
Platform Height: 190mm

## ORDER PICKER

OPR001FPK 200KG ●



**ORDER PICKER**  
EXT: 860 x 430 x 990mm  
Handle Height: 990mm

**FULL RANGE  
IN OUR  
SHOWROOM!**

## LOUVERED PANEL \*Parts bins not included

LPR001GRY ○



**LPR001GRY:** 1550 x 460mm (L x W)  
**LPR002GRY:** 305 x 915mm (L x W)  
**LPR003GRY:** 480 x 915mm (L x W)

# PLASTICS

## PARTS BINS

BNR002BLU 3KG ●●●



PARTS BIN  
EXT: 105 x 110 x 50mm  
(LxWxH)  
Polypropylene

BNR001BLU 3KG ●●●



PARTS BIN  
EXT: 105 x 140 x 75mm  
(LxWxH)  
Polypropylene

BNR003BLU 4KG ●●●



PARTS BIN  
EXT: 105 x 190 x 75mm  
(LxWxH)  
Polypropylene

BNR004BLU 8KG ●●●



PARTS BIN  
EXT: 140 x 220 x 125mm  
(LxWxH)  
Polypropylene

BNR006BLU 8KG ●●●



PARTS BIN  
EXT: 140 x 270 x 128mm  
(LxWxH)  
Polypropylene

BNR007BLU 8KG ●



STACKABLE

PARTS BIN  
EXT: 215 x 280 x 174mm  
(LxWxH)  
Polypropylene

BNR008BLU 15KG ●



STACKABLE

PARTS BIN  
EXT: 215 x 371 x 174mm  
(LxWxH)  
Polypropylene

BNR009BLU 30KG ●



STACKABLE

PARTS BIN  
EXT: 420 x 371 x 174mm  
(LxWxH)  
Polypropylene



### OPTIONAL DIVIDERS

TO SUIT BNR002 - BNR021CLR  
TO SUIT BNR008 - BNR023CLR  
TO SUIT BNR009 - BNR023CLR



## PARTS TRAYS

TRR004GRY 10KG ●



PARTS TRAY  
EXT: 600 x 117 x 90mm  
(LxWxH)  
Polypropylene

TRR005GRY 25KG ●



PARTS TRAY  
EXT: 600 x 234 x 140mm  
(LxWxH)  
Polypropylene

TRR001GRY 8KG ●



PARTS TRAY  
EXT: 300 x 234 x 90mm  
(LxWxH)  
Polypropylene

TRR002GRY 9KG ●



PARTS TRAY  
EXT: 400 x 117 x 90mm  
(LxWxH)  
Polypropylene

TRR003GRY 12KG ●



PARTS TRAY  
EXT: 400 x 234 x 90mm  
(LxWxH)  
Polypropylene

### OPTIONAL DIVIDERS

TO SUIT TRR002GRY - BNR024GRY  
TO SUIT TRR004GRY - BNR024GRY  
TO SUIT TRR001GRY - BNR025GRY  
TO SUIT TRR003GRY - BNR025GRY  
TO SUIT TRR005GRY - BNR026GRY





# TUBE ENDS

## LONG THREADED



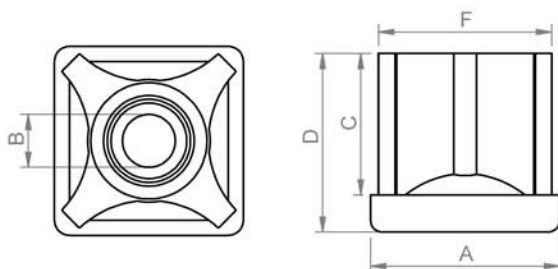
### GLASS-FILLED NYLON CONSTRUCTION

SQUARE							
Part Number	Description	Base Width (A)	Shank Width (F)	Shank Length (C)	Overall Length (D)	Thread (B)	Load Capacity
TIR19SQM08	FITS 19mm O.D SQUARE TUBE 1.2-1.4mm WALL	19mm	17mm	28mm	31mm	M8	50kg
TIR25SQM08	FITS 25.4mm O.D SQUARE TUBE 1.2-1.4mm WALL	25mm	23.8mm	39.6mm	46.6mm	M8	250kg
TIR25SQM10	FITS 25.4mm O.D SQUARE TUBE 1.2-1.4mm WALL	25mm	23.8mm	39.6mm	46.6mm	M10	250kg
TIR25SQM12	FITS 25.4mm O.D SQUARE TUBE 1.2-1.4mm WALL	25mm	23.8mm	39.6mm	46.6mm	M12	250kg
TIR32SQM08	FITS 31.8mm O.D SQUARE TUBE 1.2mm WALL	32mm	30mm	38.4mm	46.4mm	M8	350kg
TIR32SQM10	FITS 31.8mm O.D SQUARE TUBE 1.2mm WALL	32mm	30mm	38.4mm	46.4mm	M10	350kg
TIR32SQM12	FITS 31.8mm O.D SQUARE TUBE 1.2mm WALL	32mm	30mm	38.4mm	46.4mm	M12	350kg
TIR38SQM10	FITS 38mm O.D SQUARE TUBE 1.2mm WALL	38mm	36.1mm	38.1mm	46.1mm	M10	500kg
TIR38SQM12	FITS 38mm O.D SQUARE TUBE 1.2mm WALL	38mm	36.1mm	38.1mm	46.1mm	M12	500kg
TIR38SQM16	FITS 38mm O.D SQUARE TUBE 1.2mm WALL	38mm	36.1mm	38.1mm	46.1mm	M16	500kg
TIR40SQM10	FITS 40mm O.D SQUARE TUBE 1.6mm WALL	40mm	36.8mm	38.1mm	47.1mm	M10	500kg
TIR40SQM12	FITS 40mm O.D SQUARE TUBE 1.6mm WALL	40mm	36.8mm	38.1mm	47.1mm	M12	500kg
TIR40SQM16	FITS 40mm O.D SQUARE TUBE 1.6mm WALL	40mm	36.8mm	38.1mm	47.1mm	M16	500kg
TIR51SQM10	FITS 50mm O.D SQUARE TUBE 1.6mm WALL	51mm	47.9mm	36.9mm	46.9mm	M10	750kg
TIR51SQM12	FITS 50mm O.D SQUARE TUBE 1.6mm WALL	51mm	47.9mm	36.9mm	46.9mm	M12	750kg
TIR51SQM16	FITS 50mm O.D SQUARE TUBE 1.6mm WALL	51mm	47.9mm	36.9mm	46.9mm	M16	750kg
TIR51SQM20	FITS 50mm O.D SQUARE TUBE 1.6mm WALL	51mm	47.9mm	36.9mm	46.9mm	M20	750kg

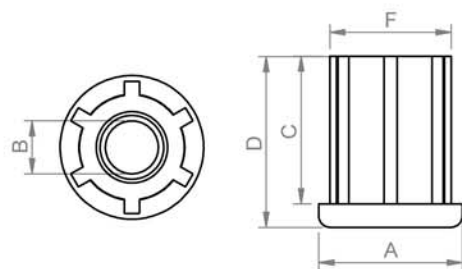
For stainless steel option add SS to the part number, eg. TIR19SQM08SS

ROUND							
Part Number	Description	Diameter (A)	Shank Diameter (F)	Shank Length (C)	Overall Length (D)	Thread (B)	Load Capacity
TIR25R0M08	FITS 25.4mm O.D ROUND TUBE 1.4-1.6mm WALL	25mm	22.9mm	37.4mm	45.8mm	M8	100kg
TIR25R0M10	FITS 25.4mm O.D ROUND TUBE 1.4-1.6mm WALL	25mm	22.9mm	37.4mm	45.8mm	M10	100kg
TIR25R0M12	FITS 25.4mm O.D ROUND TUBE 1.4-1.6mm WALL	25mm	22.9mm	37.4mm	45.8mm	M12	100kg
TIR32R0M10	FITS 31.8mm O.D ROUND TUBE 1.2-1.4mm WALL	32mm	29.5mm	39.2mm	45.3mm	M10	250kg
TIR32R0M12	FITS 31.8mm O.D ROUND TUBE 1.2-1.4mm WALL	32mm	29.5mm	39.2mm	45.3mm	M12	250kg
TIR32R0M16	FITS 31.8mm O.D ROUND TUBE 1.2-1.4mm WALL	32mm	29.5mm	39.2mm	45.3mm	M16	250kg
TIR38R0M10	FITS 38mm O.D ROUND TUBE 1.6mm WALL	38mm	35.3mm	39.4mm	45.6mm	M10	300kg
TIR38R0M12	FITS 38mm O.D ROUND TUBE 1.6mm WALL	38mm	35.3mm	39.4mm	45.6mm	M12	300kg
TIR38R0M16	FITS 38mm O.D ROUND TUBE 1.6mm WALL	38mm	35.3mm	39.4mm	45.6mm	M16	300kg
TIR51R0M10	FITS 51mm O.D ROUND TUBE 1.6mm WALL	51mm	48.5mm	39.2mm	47.4mm	M10	450kg
TIR51R0M12	FITS 51mm O.D ROUND TUBE 1.6mm WALL	51mm	48.5mm	39.2mm	47.4mm	M12	450kg
TIR51R0M16	FITS 51mm O.D ROUND TUBE 1.6mm WALL	51mm	48.5mm	39.2mm	47.4mm	M16	450kg
TIR51R0M20	FITS 51mm O.D ROUND TUBE 1.6mm WALL	51mm	48.5mm	39.2mm	47.4mm	M20	450kg

For stainless steel option add SS to the part number, eg. TIR25R0M08SS



SQUARE THREADED TUBE ENDS

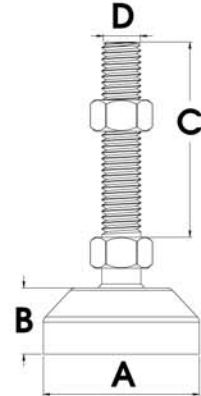


ROUND THREADED TUBE ENDS

# levelR LEVELING FEET

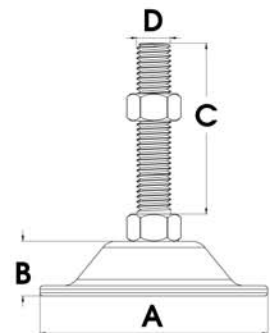
## FIXED - RUBBER BASE

Part Number	Size	Base Diameter (A)	Base Height (B)	Thread Length (C)	Thread (D)	Load Capacity
LVR601050FRU	60 x M10	60mm	25mm	50mm	M10	1000kg
LVR6010100FRU	60 x M10	60mm	25mm	100mm	M10	1000kg
LVR601250FRU	60 x M12	60mm	25mm	50mm	M12	1000kg
LVR6012100FRU	60 x M12	60mm	25mm	100mm	M12	1000kg
LVR7016100FRU	70 x M16	70mm	29mm	100mm	M16	1500kg
LVR7016150FRU	70 x M16	70mm	29mm	150mm	M16	1500kg
LVR7020100FRU	70 x M20	70mm	29mm	100mm	M20	1500kg
LVR7020150FRU	70 x M20	70mm	29mm	150mm	M20	1500kg



## FIXED- STEEL BASE

Part Number	Size	Base Diameter (A)	Base Height (B)	Thread Length (C)	Thread (D)	Load Capacity
LVR380850FST	38 x M8	38mm	11mm	50mm	M8	150kg
LVR3808100FST	38 x M8	38mm	11mm	100mm	M8	150kg
LVR381050FST	38 x M10	38mm	11mm	50mm	M10	150kg
LVR3810100FST	38 x M10	38mm	11mm	100mm	M10	150kg
LVR601050FST	60 x M10	60mm	11mm	50mm	M10	300kg
LVR6010100FST	60 x M10	60mm	11mm	100mm	M10	300kg
LVR601250FST	60 x M12	60mm	11mm	50mm	M12	300kg
LVR6012100FST	60 x M12	60mm	11mm	100mm	M12	300kg
LVR8016100FST	80 x M16	80mm	13mm	100mm	M16	500kg
LVR8016150FST	80 x M16	80mm	13mm	150mm	M16	500kg
LVR8020100FST	80 x M20	80mm	13mm	100mm	M20	500kg
LVR8020150FST	80 x M20	80mm	13mm	150mm	M20	500kg
LVR10020100FST	100 x M20	100mm	20mm	100mm	M20	700kg
LVR10020150FST	100 x M20	100mm	20mm	150mm	M20	700kg



LVR7020100FRU  
FIXED - RUBBER BASE



LVR6012100FST  
FIXED - STEEL BASE





# levelR LEVELING FEET

## BOLT DOWN

Part Number	Size	Base Diameter (A)	Thread Height (B)	Base Thread Height (C)	Base Height (D)	Thread (E)	Hole Centres (F)	Hole Diameter (G)	Load Capacity
LVR8008100B	80 x M8	80mm	100mm	35mm	18mm	M8	56mm	10mm	350kg
LVR8010100B	80 x M10	80mm	100mm	32mm	18mm	M10	56mm	10mm	500kg
LVR8012100B*	80 x M12	80mm	100mm	33mm	18mm	M12	56mm	10mm	800kg
LVR8012150B	80 x M12	80mm	150mm	35mm	18mm	M12	56mm	10mm	800kg
LVR10012100B	100 x M12	100mm	100mm	41mm	29mm	M12	73mm	13mm	800kg
LVR10012150B	100 x M12	100mm	150mm	44mm	29mm	M12	73mm	13mm	800kg
LVR10016150B	100 x M16	100mm	150mm	45mm	28mm	M16	73mm	13mm	1000kg
LVR12716150B	127 x M16	127mm	150mm	47mm	29mm	M16	102mm	13mm	1000kg
LVR12720150B	127 x M20	127mm	150mm	47mm	30mm	M20	102mm	13mm	1000kg

For stainless steel option add SS to the part number, eg. LVR8008100BSS. Models marked \* not available in stainless steel

## BALL JOINTED

Part Number	Size	Base Diameter (A)	Thread Height (B)	Base Thread Height (C)	Base Height (D)	Thread (E)	Load Capacity
LVR400850S	40 x M8	40mm	50mm	30mm	17mm	M8	350kg
LVR4008100S	40 x M8	40mm	100mm	33mm	17mm	M8	350kg
LVR401050S	40 x M10	40mm	50mm	30mm	16mm	M10	500kg
LVR4010100S	40 x M10	40mm	100mm	32mm	18mm	M10	500kg
LVR600850S	60 x M8	60mm	50mm	36mm	24mm	M8	350kg
LVR601050S	60 x M10	60mm	50mm	36mm	24mm	M10	500kg
LVR6010100S	60 x M10	60mm	100mm	38mm	24mm	M10	500kg
LVR601250S	60 x M12	60mm	50mm	36mm	24mm	M12	800kg
LVR6012100S	60 x M12	60mm	100mm	36mm	24mm	M12	800kg
LVR801250S	80 x M12	80mm	50mm	36mm	24mm	M12	800kg
LVR8012100S	80 x M12	80mm	100mm	36mm	24mm	M12	800kg
LVR8016100S	80 x M16	80mm	100mm	38mm	23mm	M16	1000kg
LVR8016150S	80 x M16	80mm	150mm	38mm	24mm	M16	1000kg
LVR8020100S	80 x M20	80mm	100mm	42mm	23mm	M20	1000kg
LVR8020150S	80 x M20	80mm	150mm	42mm	24mm	M20	1000kg

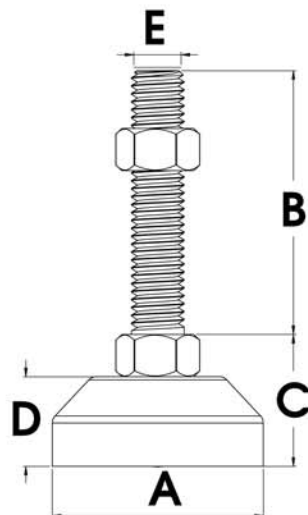
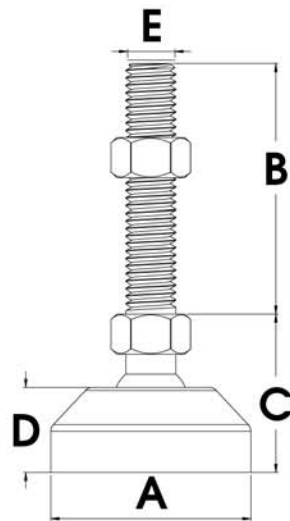
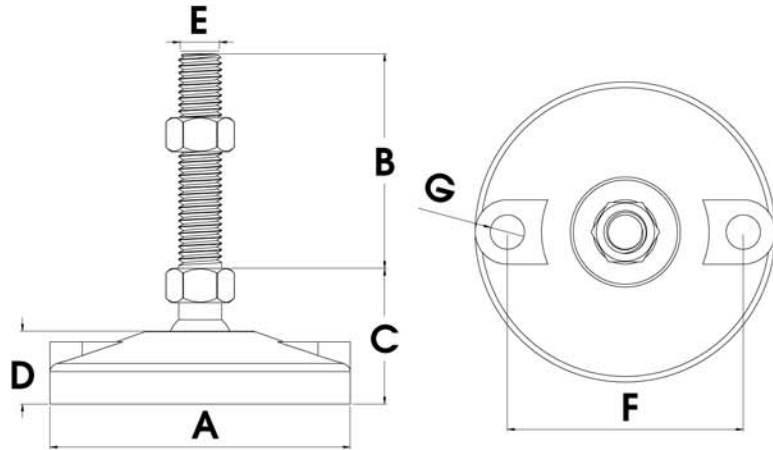
For stainless steel option add SS to the part number, eg. LVR400850SSS

## FIXED

Part Number	Size	Base Diameter (A)	Thread Height (B)	Base Thread Height (C)	Base Height (D)	Thread (E)	Load Capacity
LVR500850F	50 x M8	50mm	50mm	31mm	23mm	M8	350kg
LVR501050F	50 x M10	50mm	50mm	31mm	23mm	M10	500kg
LVR601250F	60 x M12	60mm	50mm	33mm	25mm	M12	800kg
LVR6012100F	60 x M12	60mm	100mm	33mm	25mm	M12	800kg
LVR6016150F	60 x M16	60mm	150mm	35mm	25mm	M16	1000kg
LVR6020150F	60 x M20	60mm	150mm	35mm	25mm	M20	1000kg
LVR8012100F *	80 x M12	80mm	100mm	40mm	30mm	M12	500kg
LVR8012150F	80 x M12	80mm	150mm	40mm	30mm	M12	500kg
LVR8016150F *	80 x M16	80mm	150mm	40mm	30mm	M16	800kg
LVR8020150F	80 x M20	80mm	150mm	40mm	30mm	M20	1000kg

For stainless steel option add SS to the part number, eg. LVR500850FSS. Models marked \* not available in stainless steel

# level**R** LEVELING FEET

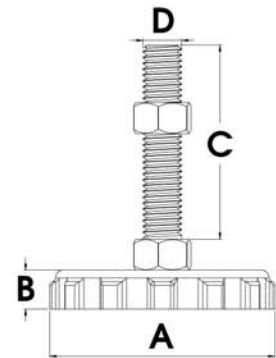




# LEVELING FEET

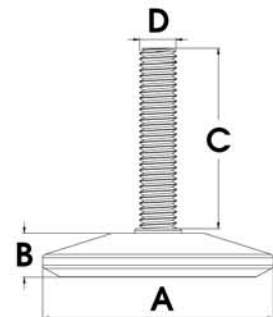
## FIXED - NYLON KNOB

Part Number	Size	Base Diameter (A)	Base Height (B)	Thread Length (C)	Thread (D)	Load Capacity
LFR250638FNK	25 x M6	25mm	10mm	38mm	M6	100kg
LFR250650FNK	25 x M6	25mm	10mm	50mm	M6	100kg
LFR250838FNK	25 x M8	25mm	10mm	38mm	M8	100kg
LFR250850FNK	25 x M8	25mm	10mm	50mm	M8	100kg
LFR380838FNK	38 x M8	38mm	10mm	38mm	M8	200kg
LFR380850FNK	38 x M8	38mm	10mm	50mm	M8	200kg
LFR381050FNK	38 x M10	38mm	10mm	50mm	M10	200kg
LFR3810100FNK	38 x M10	38mm	10mm	100mm	M10	200kg
LFR501050FNK	50 x M10	50mm	10mm	50mm	M10	300kg
LFR5010100FNK	50 x M10	50mm	10mm	100mm	M10	300kg
LFR501250FNK	50 x M12	50mm	10mm	50mm	M12	300kg
LFR5012100FNK	50 x M12	50mm	10mm	100mm	M12	300kg
LFR631050FNK	63 x M10	63mm	10mm	50mm	M10	500kg
LFR6310100FNK	63 x M10	63mm	10mm	100mm	M10	500kg
LFR631250FNK	63 x M12	63mm	10mm	50mm	M12	500kg
LFR6312100FNK	63 x M12	63mm	10mm	100mm	M12	500kg



## FIXED- NYLON CONE

Part Number	Size	Base Diameter (A)	Base Height (B)	Thread Length (C)	Thread (D)	Load Capacity
LFR400850FNC	40 x M8	40mm	13mm	50mm	M8	100kg
LFR501050FNC	50 x M10	50mm	13mm	50mm	M10	150kg
LFR601250FNC	60 x M12	60mm	13mm	50mm	M12	200kg



LFR250838FNK  
FIXED - NYLON KNOB



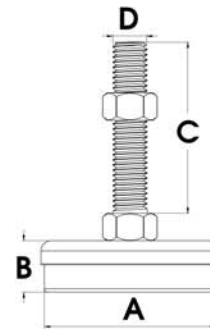
LFR400850FNC  
FIXED - NYLON CONE



# LEVELING FEET

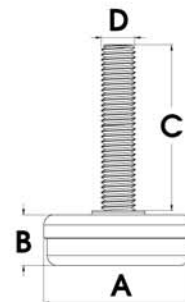
## FIXED - STEEL/RUBBER

Part Number	Size	Base Diameter (A)	Base Height (B)	Thread Length (C)	Thread (D)	Load Capacity
LFR300650FSR	30 x M6	30mm	15mm	50mm	M6	200kg
LFR300850FSR	30 x M8	30mm	15mm	50mm	M8	200kg
LFR400850FSR	40 x M8	40mm	17mm	50mm	M8	300kg
LFR4008100FSR	40 x M8	40mm	17mm	100mm	M8	300kg
LFR401050FSR	40 x M10	40mm	17mm	50mm	M10	300kg
LFR4010100FSR	40 x M10	40mm	17mm	100mm	M10	300kg
LFR501050FSR	50 x M10	50mm	17mm	50mm	M10	450kg
LFR5010100FSR	50 x M10	50mm	17mm	100mm	M10	450kg
LFR501250FSR	50 x M12	50mm	17mm	50mm	M12	450kg
LFR5012100FSR	50 x M12	50mm	17mm	100mm	M12	450kg
LFR601050FSR	60 x M10	60mm	20mm	50mm	M10	600kg
LFR6010100FSR	60 x M10	60mm	20mm	100mm	M10	600kg
LFR601250FSR	60 x M12	60mm	20mm	50mm	M12	600kg
LFR6012100FSR	60 x M12	60mm	20mm	100mm	M12	600kg



## FIXED- STEEL/NYLON

Part Number	Size	Base Diameter (A)	Base Height (B)	Thread Length (C)	Thread (D)	Load Capacity
LFR250825FSN	25 x M8	25mm	10mm	25mm	M8	200kg
LFR361045FSN	36 x M10	36mm	12mm	45mm	M10	350kg
LFR421045FSN	42 x M10	42mm	14mm	45mm	M10	500kg



LFR601050FSR  
FIXED - STEEL/RUBBER



LFR361045FSN  
FIXED - STEEL/NYLON





# levelR CASTOR

Adjustable leveling castor, with multifunctional and multipurpose usage. Allows easy moving, setting and leveling with cushion support. Adjusts up to 10mm over the total height of the castor.



S55LEVELR

## SWIVEL ADJUSTABLE LEVELING CASTOR

Part Number	Wheel Diameter	Wheel Width	Overall Height	Wheel Type	Bearing Type	Load Capacity
S55LEVELR	50mm	24mm	82mm	Polyurethane	Ball	200kg

## ALSO AVAILABLE



**LOCKING  
KNOBS**



**SQUARE TUBE  
END CAPS**



**ROUND TUBE  
END CAPS**



# CONTAINER LOCKING CASTOR KIT

**Richmond's Container Locking Castor Kit is an accessory that can be fitted to any of Richmond's 3000 Series or 5000 Series castors.** The purpose of these fittings is to securely connect containers to trucks during transport and to allow for safe stacking of containers during sea transport and storage.

The container locking kit bolts to the base plate of the castor which then allows for the castor to be fitted to the corner fittings, transforming the immovable container into a trolley. Shipping containers have 2 left and right fittings, so to order the correct fittings to move a container, order 2 x 195CONT-LOCKITL and 2 x 195CONT-LOCKITR.



## KIT CONTENTS

- 1 x Left or right corner fitting
- 1 x Locating bush
- 1 x M30 bolt
- 1 x Flat washer
- 4 x M30 Spring washers & fasteners

TO MOVE A CONTAINER ORDER 2 x 195CONT-LOCKITL AND 2 x 195CONT-LOCKITR

